

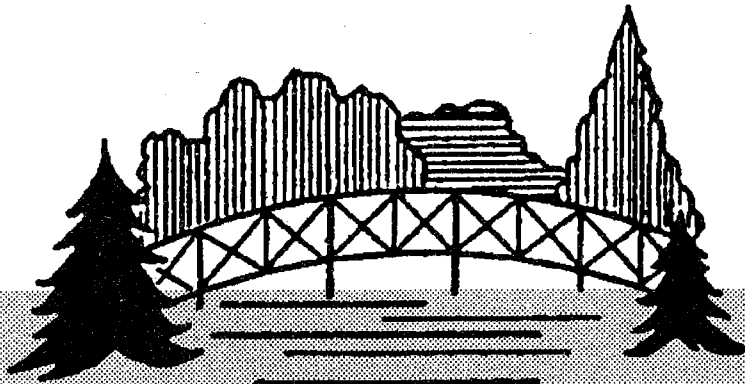
# Camp Henry F. Koch



1942 — 1992



GIRL SCOUTS



Logo by Connie Bussing

Open House — October 19, 1941  
Dedicated — June 28, 1942  
Rededicated — June 28, 1992



# Contents

Acknowledgements .....	2
Celebrating 50 Years .....	3
Henry Francis Koch .....	6
The Story of the Land .....	7
The Legend of Ox Hollow .....	11
Blue Wells .....	12
First Open House .....	16
Dedication Day .....	17
Maps .....	18, 19
Resident Camping .....	20
Buildings at Camp Koch .....	23
Resident Camp Directors .....	29
Camp Rangers .....	30
Camp Nurse .....	31
Camp Koch's Cooks (Tessie's Coffee Cake) .....	32
Camp Koch Song .....	33
Did You Know? .....	34
"I Love Camp Koch" Club .....	36
Camp Staff 1942-1992 .....	38

# Grateful Acknowledgement

This book would not have been possible without the help of many people who searched their memories, generously supplied information, and/or allowed access to rare materials. We sincerely thank them.

Barbara Jones Moore

Cannelton Library

Chuck Froehle

Citizens Historical Association, Indianapolis

Dorthea Lehman Ferrara

Evansville Central Library

Jane Hafele Scott

Jenny Lind

Living History of Perry County by James Mosby

Perry County History by Thomas Delahunt

Perry County Historian, Mike Rutherford

Perry County Soil Conservation Office

Tell City Library

University of Southern Indiana Archives, Jeanne Walker, Archivist

Virginia Koenemann

Virginia Lehman Groves

Thanks to the many former and present Girl Scouts who supplied information to the History Committee.

## *Special Thanks*

To **Bea Koch, Lu Froehle, and Eleisa Beckort**, who did endless research, compiled information, and wrote the original manuscript for this work.

To **Jim Kelley**, who designed the pages, did the layout, finished the photos, and guided this work into a published reality.

# Celebrating 50 Years

## Golden Birthday Events

Raintree Girl Scout Council, in order to commemorate Camp Koch's 50<sup>TH</sup> Birthday, hosted events for all ages. More than 2,000 people from throughout the United States attended the different celebrations.

Friday - Sunday, October 3 - 5, 1991 .....	Playing Lightly On the Earth
Sunday, October 27, 1991 .....	Kick-Off Dinner
Saturday, May 2 & 9, 1992 .....	Daisy/Brownie Playdays
Friday - Sunday, May 15 - 17, 1992 .....	Playing Lightly On the Earth
Friday - Sunday, May 22 - 24, 1992 .....	Cadette/Senior Weekend Past Camp Staff Reunion
Sunday, June 28, 1992 .....	Rededication Ceremony History Book Published

## Camp Koch 50<sup>TH</sup> Birthday Committee Chairs

General Chairman .....	Bettye Statham
Kickoff Dinner .....	Judi Keown
Kickoff Activities .....	Mary Jane Little
Money Earning .....	Martha Schaefer
Daisy/Brownie Days .....	Judy Montgomery
Junior Weekend (Playing Lightly On the Earth) .....	Green Aide Brigade
Cadette/Senior Weekend .....	Mag Lindsey
Service Projects .....	Janet Fox
History .....	Beatrice Koch
People Finders .....	Elizabeth Buck
Rededication .....	Valerie McKinney

# PROCLAMATION

## Camp Henry F. Koch 50th Birthday Celebration

It is with great pride that Raintree Girl Scout Council offers this outdoor education center, Camp Henry F. Koch, to our members. We recognize and appreciate the important role it plays in delivering a high quality Girl Scout program. Therefore, in honor of the 50th year since the acquisition of Camp Henry F. Koch's initial 42 acres, I issue the following proclamation on this 27th day of October 1991:

*WHEREAS*, Raintree Girl Scout Council acquired this property through the generosity of Mr. Henry F. Koch in 1941. And,

*WHEREAS*, the beauty of this peaceful place has inspired generations to gain understanding and appreciation of themselves and others. And,

*WHEREAS*, the cool waters and serene valleys of this land have renewed and restored the spirits of many. And,

*WHEREAS*, the bountiful and diverse flora and fauna found here have taught many that all life must be respected and valued. And,

*WHEREAS*, these rugged hills have challenged thousands to accept their responsibility of caring for our earth. And,

*WHEREAS*, all current and past Girl Scouts within Raintree Council's jurisdiction are sincerely grateful to have access to Camp Henry F. Koch.

*NOW THEREFORE*, I, Margie A. Dennis, President of Raintree Girl Scout Council, do hereby proclaim October 27, 1991 through June 28, 1992 Camp Henry F. Koch's 50th Birthday Celebration.

Margie A. Dennis, President

Authored by Jan Davies, Executive Director

# Forward

In 1932, the Community Committee for the Evansville Girl Scouts was formed. The organizers believed that, "...to give the girls a good relationship with the out-of-doors, there was a need for some type of camping facilities."

Boy Scout Camp Pohoka was chosen as the site of the first resident camp program in August, 1932, where nearly 100 girls from the Evansville Girl Scouts attended.

In the years that followed, Camp Pohoka and McCormick's Creek were used for resident camping by the Evansville girls. Soon the number of girls who wanted to participate indicated there was a need for a permanent resident camp. The generosity of the Evansville philanthropist, Henry F. Koch made a permanent resident camp a reality.

The history of Camp Henry F. Koch that follows has been gathered from various resources. The 50th Anniversary History Committee has tried very hard to document this history. Should there be some question regarding the Committee's facts, your help to clarify would be greatly appreciated.

Raintree Girl Scout Council 50th Anniversary History Committee

*L. Beatrice Freund Koch, Chair*

*Mary Lou Hafele Froehle*

*Eleisa A. Beckort*

# Henry F. Koch

Henry Francis Koch was born of immigrants in Evansville, Indiana, on August 25, 1881. He earned a high school education and, for six weeks, was a teacher in the Evansville Central High School.



He began as a five-dollar-a-week file clerk for the George L. Mesker Company. After working in all departments, he was made General Manager of that Company. He resigned in 1937 and created the Koch Convertograph Company where he installed technologically advanced equipment. He also founded the Koch Sand & Gravel Company, the Koch Investment Company, Mesker-Koch Realty Company, the H.F. Koch Stations Company, and the Koch Realty Company. At his death in 1953, it was estimated that his net worth was well over \$350,000.

Mr. Koch was a man who liked to do things in his own way, and, at times, was a controversial figure in the community. A philanthropist and businessman, he became a part of the Girl Scout Movement as an advisor to the Budget Committee. By 1935 he had helped finance a Permanent Camp Fund.

In 1941 Henry F. Koch purchased the land which is now a part of Girl Scout Camp Koch. He continued his financial backing of other projects at Camp Koch in the years that followed. The dining hall, the gate house and garage, the ranger's house, the lakeside bath house, and the entrance gate are all a part of Henry F. Koch's legacy. It is printed in the Camp Committee minutes, that prior to his death, he had given the Girl Scouts approximately \$100,000 in financial aid and had also set up a small trust fund to be used by the Council for the camp.

# The Story of the Land

The sandstone bluffs at Camp Koch, are the oldest rock formations in Perry County, Indiana. They were deposited more than 600 million years ago in a shallow sea which covered the entire central portion of the North American Continent. The tremendous weight of these, along with the weight of the water, pressed the lower deposits into solid rock. This sandstone layer was pushed up by mountain-building forces 20 to 30 million years ago. The Ohio River, previous to the glaciers, flowed through southern Indiana as it does today, however, it was a much smaller, younger river extending only as far east as Madison, Indiana.

The Teays River drained northward through part of eastern Kentucky, southern Ohio, and West Virginia. This ancient river headed west across northern Indiana and Illinois, through the present site of Lafayette, Indiana, to join the Mississippi River north of Springfield, Illinois.

About 10 million years ago a glacier blocked the Teays River in northern Indiana, which backed water up to create a large lake covering much of east-central Ohio and northeastern Indiana. The water eventually became deep enough to back up the Kentucky River, jump the divide east of Madison, Indiana, and rush into the Ohio River. When all the extra water from the melting glaciers entered the Ohio River, it became a raging torrent which cut the river bed from the present elevation of the bluff tops at Camp Koch to nearly 100 feet below the present river bottom—an approximate 300-foot cut.

As the glaciers melted, the sea level rose and reduced the grade of the river bed; when the water slowed down, sediment began to drop out and fill it. Trees were cleared and the land was plowed by early settlers, which increased sedimentation until the river reached its present level. Sedimentation is still occurring today.

During the glacial period the sea level was much lower because of the water held in the glaciers. Many glaciers were 100 to 200 feet thick and hundreds of miles long. Almost 12,000 years ago the lower sea level exposed a land bridge nearly 1,000 miles wide. Nomadic tribes from Siberia followed large herds of mastadons, woolly mammoths, prehistoric buffalo, and musk ox as they wandered onto a new continent. As they meandered south toward a warmer climate they encountered abundant wildlife and vegetation. Southern Indiana, at that time, was covered with Spruce-Aspen forests, much like northern Canada is today.

Indian populations increased sharply about 5,500 years ago because they began to grow some of their food in addition to hunting wild game. The change in their lifestyle led them to build permanent settlements and store grain. (Some grain may have been stored in the Camp Koch caves.) They developed skills such as basket weaving and pottery making which allowed them to cook tubers, pumpkin, and corn. Cooking these foods required more skill than roasting meat on a stick over an open fire had demanded. This period is where mound burial sites also began to appear. Indians who inhabited Angel Mounds east of Evansville, Indiana, and those around other mound-building sites in Ohio, Illinois, and other parts of Indiana lived during this time.

A recent anthropological theory suggests that the Mound-Building Indians evolved into the Woodland Indians who traded with the early settlers.



# The Story of the Land

## Indians and Traders

There is evidence that Perry County was the home of Mound Builders—nomads and semi-nomads, who left mounds, artifacts, and implements as proof of their occupancy of the region. There are several mounds located in the area and many artifacts have been found there. Mound Builders occupied the Perry County area in the same time frame as the Assyrian, Babylonian, and Egyptian civilizations flourished.

No reason is known for the departure of the Mound Builders, but they were all gone by the time the first white man had settled on the North American Continent. No one knows where they came from or where they went.

It is believed the first white explorers in Indiana were the French Voyageurs—missionaries or traders—who paddled their shallow canoes along the Ohio River. They came to trade with the Woodland Indian tribes of Indiana (not to be confused with the Mound Builders.) The tribes of the area were: Miami, Wea or Ouiatenon, Wyandotte, Shawnee, and the Piankashaws.

Indians moved through this area for two reasons: the hunting was good and salt licks were available. Most Indians crossed the Ohio River near Rock Island, Indiana. The crossing was less than a mile from camp, where the river, in those days, was very shallow.

After the French and Indian Wars, most tribes left Indiana, however a few Indian families remained.

Lover's Leap is five miles from Camp Koch and legend has it that an Indian maiden and a brave of another tribe leaped to their death because the tribal council forbade their marriage.

## Flatboats and Pirates

Flatboats and floating stores were common along the Ohio River in the early-to-mid 1800s. In the days before steamboats, many settlers came to Indiana via Pittsburgh, Pennsylvania on flatboats. They stopped along the river to tie up at settlements or at the mouths of streams. The boats, about 60 feet long and 20 feet wide, held a boxlike building which served as the store, living quarters, and storage section for items which were bartered along the way. Flatboats carried livestock in pens, pelts, and grains.

### *A Trader's Bartering List*

1 skin of fox or beaver .....	four cups sugar or salt
8 pelts .....	1/2 barrel of flour or cornmeal
1 skin or pelt .....	large box tea
hog (size and quality).....	\$2 or \$2.50 per head hard coin
steer .....	\$7.50 to \$12.50 per head hard coin

(Hard money or coins were very scarce)

The crews of these boats kept a watchful eye for river pirates. They would sometimes wait along the rivers and attack and kill the crew, or rob the passengers and take the cargo. A group of these pirates worked along the Ohio River between Troy and Derby, Indiana. As river travel increased so did the pirates.

# The Story of the Land

## The Roosevelt Family

More than one-hundred years ago, the hills surrounding Camp Henry F. Koch were owned by the Nicholas Roosevelt Family. The land was granted to them by the U.S. Government. They kept this land in their possession for many years. (It is the same Roosevelt family to which 26th U.S. President, Theodore Roosevelt and 32nd U.S. President, Franklin D. Roosevelt belonged.)

From the Roosevelts, the property passed to the American Cannel Coal Company, a coal mining company. The Frontier/Woodhaven path which Girl Scouts use today was once an old railroad roadbed, discarded over a half century ago. Its old-fashioned cars carried the coal to the river, where it was lowered onto boats and transported down the river.

## Lafayette Springs

Approximately 1000 feet from the front gate of Camp Henry F. Koch is the well-known historical spot, Lafayette Springs. Here the famous Frenchman General Marquis D. Lafayette found water and shelter for his shipwrecked crew from the steamer "Mechanic." On board the night of the fateful wreck were, Governor Coles of Illinois, Governor Carroll of Tennessee, General O. Fallon, and Major Nash.

In May 1825, during a storm near midnight, the Mechanic was touring the United States and struck Rock Island, a jagged island in the river. (Rock Island is no longer visible since the construction of the Cannelton Locks and Dam.) No lives were lost but Lafayette lost his carriage, most of his personal belongings—including his desk—and \$9,300 in gold.

His scheduled tour was delayed for about a week, during which time Mr. James Cavender, who lived in a log cabin, offered shelter to Lafayette. The crew, passengers, and Lafayette were picked up by the ship "Paragon" and transported to Louisville, Kentucky. Lafayette left behind his carriage, his money, and all his personal belongings, but took with him the admiration and love of the Perry County people.

## The Lincolns in Indiana

Abraham Lincoln's family lived in Nelson County, Kentucky. His father, Thomas, brought the family to Indiana by wagon with all they owned, including tools, furniture, and a few animals. They had very little money, but hoped they could find land with a clear title.

Enroute to their Indiana home, the Lincolns moved through Meade and Breckenridge Counties. They crossed the Ohio near Rock Island and spent the night at Lafayette Springs. They continued to follow the river through Cannelton, an early route of wild animals and Indians, along what was later the plank road to Troy.

Most historians believe the Lincolns crossed the river above Troy. Old river information suggests this would have been nearly impossible due to river conditions. The area above Troy was used by river pirates who attacked flatboats and travelers, and shipped booty by flatboat up the Anderson River to a place called Pirate's Cove. At Troy the river was wide and had a strong current. At Rock Island it was more narrow, calm and, hence, heavily traveled.

# The Story of the Land

## Morgan's Raiders

During the Civil War, General John Morgan led a group of rebel guerrillas on raids throughout Kentucky and Indiana. Across the river, a short distance away from camp, is Morgan's Cave, where Morgan's men hid out during the war. The cave is at the base of a rock-walled plateau called Jefferie's Bluff. Here they stored guns, ammunition and supplies for the Confederate troops. In the Rock Island area, rumors of invasion by Morgan's Raiders terrorized the community.

## Rock Island Quarries

The American Cannel Coal Company of Cannelton, Indiana, acquired the land in and around Camp Henry F. Koch on March 30, 1836, from the Roosevelt family. They hoped to profit from the clay pits, coal, and sandstone there. Of these, only the coal and sandstone proved profitable.

A quarry was constructed in what is now the amphitheater area of Camp Koch. An earlier operation had taken place there in 1832-33 by Jacob Meinhardt and an unidentified stone cutter from Germany. They quarried stone in blocks which averaged 35 cubic feet each and shipped them by flatboat to various destinations. By 1890, a steam derrick was used for this purpose.

The "Old Stone House" which overlooks the Ohio River between the locks-and-dam and Newburgh was built from this stone in 1833-34. The house is well preserved to this day and is currently owned by the University of Evansville. Several of Cannelton's historic district sandstone buildings are also built from this stone. (The sharp quarrying lines are still visible on the rock cliffs.)

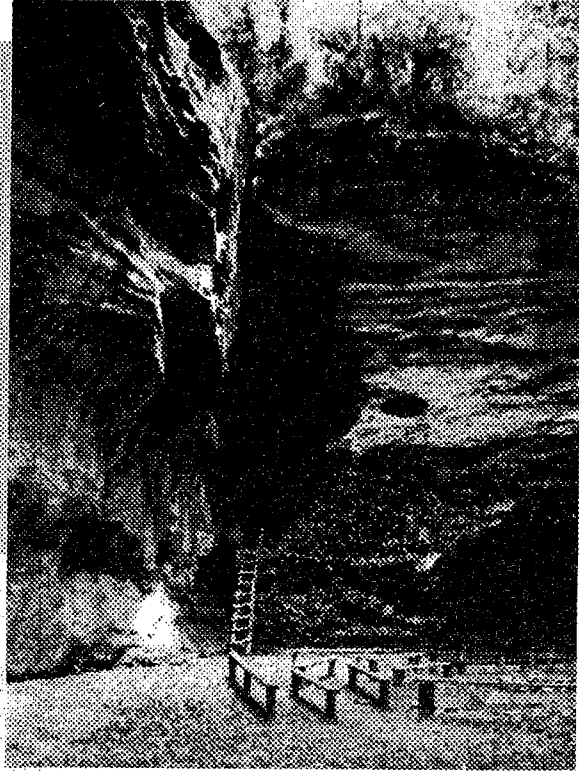
Coal was mined there during this period, as well. Today visitors can see results of this mining at the slate pile near the Frontier Unit. A crude railroad ran from the mine down to the river where the coal was loaded on barges or flatboats. The cars were pulled back up the hill by mules.

Between 1865 and 1876 the Rock Island Post Office served the area. A school and several stores operated there between the late 1890's-early 1900's.

# The Story of the Land

## The Legend of Ox Hollow

**Early recorded history of the area in and around Camp Henry F. Koch has been passed on through legends and lore.**



“Ox Hollow” lies at the eastern end of the lake between the dining hall and the infirmary. It was named from the legend of an early pioneer family who made its way through the Indiana wilderness into the Northwest Territory. In early times, the trails followed the ridge tops, most of which were Indian trails and animal paths. Some trails threaded dangerously near sheer cliffs with drops of several hundred feet. Such was the situation above “Ox Hollow.”

No one knows the year when the trip was made, or even the name of the pioneer family who treked through in an ox-drawn Conestoga wagon. They used the river, the abundant food supply, and the great number of plants and animals available to them along the trail, just as the Indians did. Near a sharp downgrade, just above “Ox Hollow,” the two red-eyed oxen became frightened and lurched forward, pulling the heavily-laden wagon out of the deep ruts in the trail. As the driver called frantically to the team, hoping at the last moment to bring them under control, the wheels of the wagon ran over the cliff's edge. When the wagon plunged down the steep side of the cliff into the hollow below, it carried with it the frantic driver and his family as well as the oxen, young sapling trees, and underbrush. The steel-shod wheels struck the sides of the cliff, leaving the marks on the way down. (With a little imagination, you can still see the marks that were left by this event.)

Whether or not the family was killed is not recorded, but it is assumed that the oxen were. Since that time, the name “Ox Hollow” has been attached to the area we know as the Firebowl Area. It is here that campfires and Scouts' Owns are held.

The cave behind the firebowl has had many footprints left on its floor. Stories suggest it was a perfect hideout for Indians and early settlers.

# The Story of the Land

## Blue Wells

By the early 20th century, the Blue Wells area of Camp Henry F. Koch was a popular picnic spot. This area probably became known as "Blue Wells" sometime around 1890.

An almost perfectly shaped "punch bowl" was formed by a small waterfall which eroded the sandstone over the years. The main attraction was the pool of limpid blue water, fed by a spring from the rocks above. The water, the rocks, and cliffs created a perfect place for relaxing, romancing, and picking wildflowers.

Campers still like to hike to Blue Wells today.



**Blue Wells was a popular picnic spot in about 1908.**

# The Story of the Land

## The Andy C. Danhauer Family

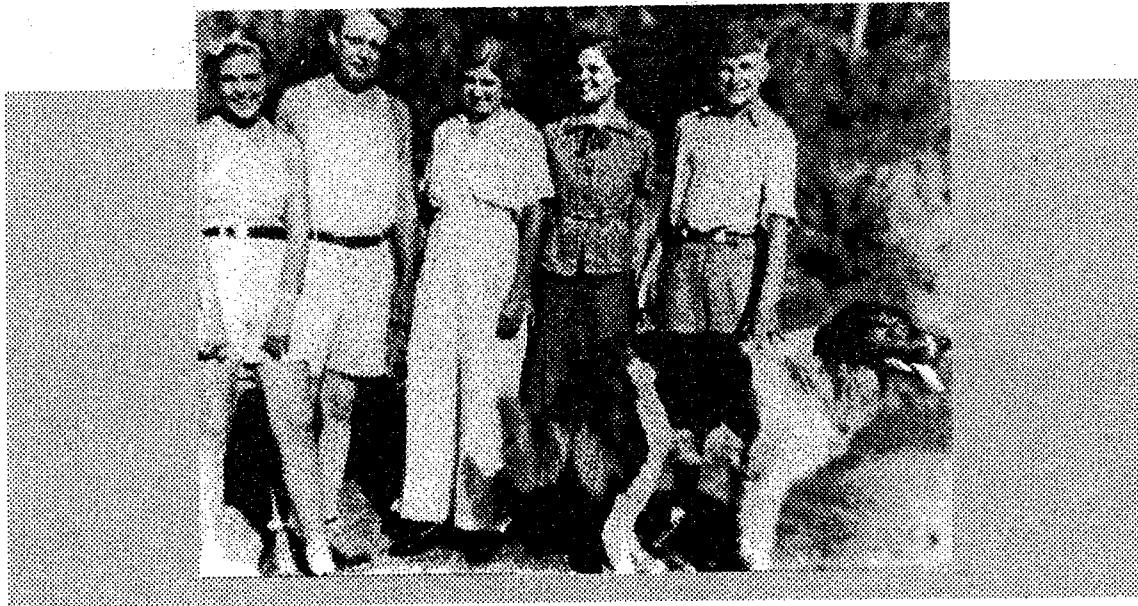
Early in 1930, Andy C. Danhauer, of Cannelton, Indiana, while searching for a suitable camp ground for his twin sons and their Boy Scout friends, found "Ox Hollow." He fell in love with the hills on the property and purchased them. At that time, there was no lake—just cliffs, springs, and a beautiful forest which served as picnic grounds for his family and friends.

## The William C. Lehman Family

In 1932, the William C. Lehman Family purchased the property, which is now a part of Camp Koch, from Andy C. Danhauer. Several years after the first purchase, they added a tract of 52 acres on which they planted an orchard of fruit trees.

In 1933, the first bridge was built, before there was a lake or a house. The first Lehman home was built shortly thereafter and a house-warming was held on June 18, 1933 — Mr. and Mrs. Lehman's anniversary.

By choice, this house had no electricity. Aladdin lamps and kerosene lanterns gave the home a rustic ambience. The house was built on two levels. The walk-in basement contained a bar, fireplace, and family area. On the upper level there were bedrooms, a kitchen and dining areas. Mrs. Lehman planted 1500 pine tree seedlings, many of which are now stately old trees that add much to the beauty of the camp.



On December 7, 1936, the first house was destroyed by fire. Tragically, Mrs. Lehman (Dorthea), son William, and the family dog died in the fire. The heat was so intense that appliances melted and coke bottles were reduced to glass blobs. The cause of the fire was unknown and the fire fighters arrived too late and were unable to get their trucks across the bridge to fight the fire.

# The Story of the Land

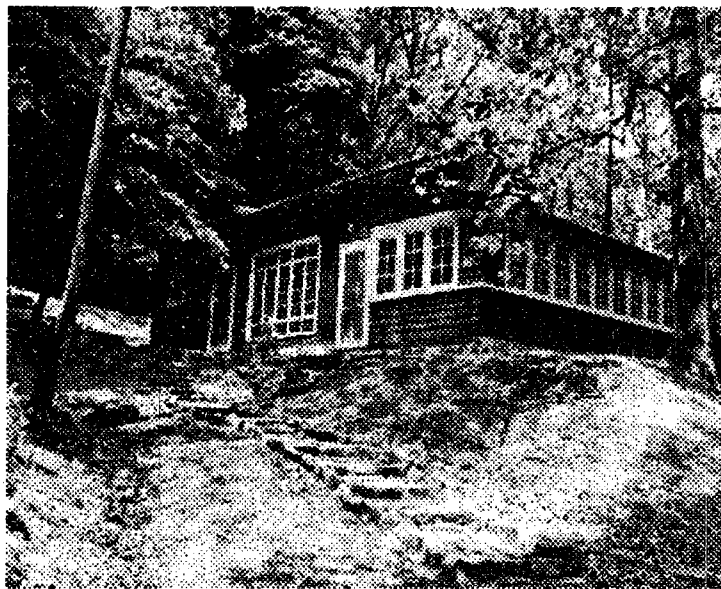
The second house, which now serves as the Staff House, was built of cypress wood and contained eight rooms. Several years ago, a number of changes were made in the home's interior when extensive remodeling was done. The living room, kitchen, and breakfast nook were combined into one unit; however, this room still contains the same brick fireplace and mantle with French windows on the south wall which were in the Lehman home. All rooms in the home have an airy appearance with a lake view.

The full basement, with its ground-level entrance, is divided into several rooms—one of which is used for storing swimming and boating equipment today. The patio behind the staff house is the original concrete basement floor of the first Lehman Home.

During the Lehman era, a power plant was built for the home. It was fueled by gasoline, and a floodlight was installed on the boat dock. This was directly in front of the house and enabled the family to enjoy nighttime water activities. There was no diving board, but a rope from a tree provided many hours of swimming fun. A reservoir was constructed on the hill behind the house to provide running water into the house. Today we know this as "Lehman's Folly."

The Lehmans built a tennis court on the hillside several hundred feet behind the house, near where Camp Koch's old Pioneer Unit was located.

The State of Indiana stocked the lake with game fish, including small mouth bass, bluegill, and crappie. Local, as well as out-of-town friends—Indiana Governor Harry Leslie and Sherman Minton, who later became a Justice of the Supreme Court among them—enjoyed, fishing there.



The picnic area (where the director's tent and the first dining hall were located) was always a popular spot. Mr. and Mrs. Lehman enjoyed cooking barbecued ribs, fried chicken, or Ohio River catfish for large groups, including various church denominations. Priests at St. Meinrad held a retreat at the lake, and the Baptist Church performed a baptismal ceremony at the waterfront. The first bridge, which had not been treated to repel water, collapsed under the weight of 13 dignitaries who had come to camp for one of the special picnics. All 13 of the dignitaries landed in the lake.

In 1941, Mr. Lehman left the Cannelton area to assume an executive position with a large furniture manufacturer. It was then, through a real estate agent and the persuasive ways of some Girl Scout adult members, that Mr. Koch learned of the property and purchased it on September 12, 1941.

# The Story of the Land

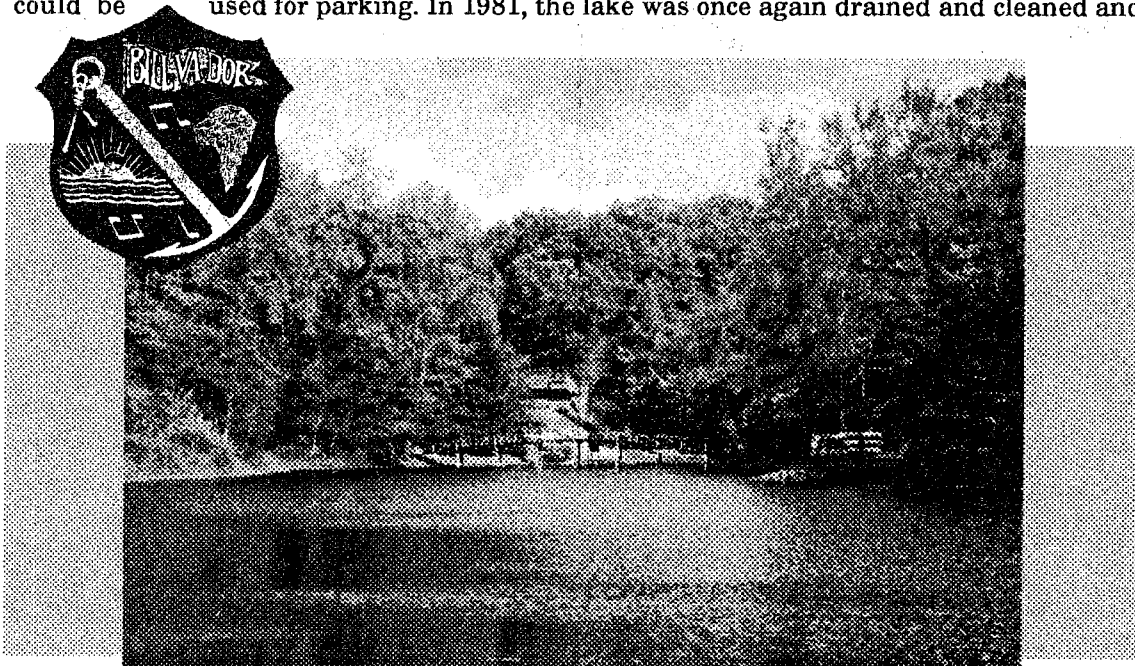
## The Lake—Lake Bill-Va-Dor

Lake Bill-Va-Dor is an artificial lake built in 1932 by the construction of a dam. It was the dream of William C. and Dorthea Lehman. The name was derived from: Bill (father) and Bill (son) Virginia (daughter) Dorthea (mother) and Dorthea (daughter)

The lake covers approximately six acres, and the water supply comes from abundant springs and the watershed of approximately 2000 acres. High, wooded hills and sandstone cliffs surround the lake and campers who swim in the warm waters in summer feel occasional cool spots from springs within the lake.

The dam which forms the lake was constructed with a clay core 12 feet wide; it extends 30 feet below ground level. Quicksand was encountered during construction and the workmen used ropes around their waists to keep from falling into it. Water first ran over the spillway of the dam in January 1933. During the historic flood in January 1937, the waters of the Ohio River poured over the dam and into the lake. When they receded, the dam was still intact—proof of how well it had been built by Mr. Frank Paulin. All other construction in and around the lake, including the two houses, was done by A. Hafele Construction Company.

In 1948 and in 1962 the lake was drained and cleaned, and a new bridge was built. In 1968 a new dam and spillway was constructed and the top of the dam was rocked so it could be used for parking. In 1981, the lake was once again drained and cleaned and



a new bridge and diving platform were built. The small arch bridge was replaced in 1985 after a tree fell on the old one.

Fishing, boating, swimming and diving, are favorite camper pastimes. Campers also enjoy sleeping on the big bridge that crosses the lake.



## Open House October 19, 1941

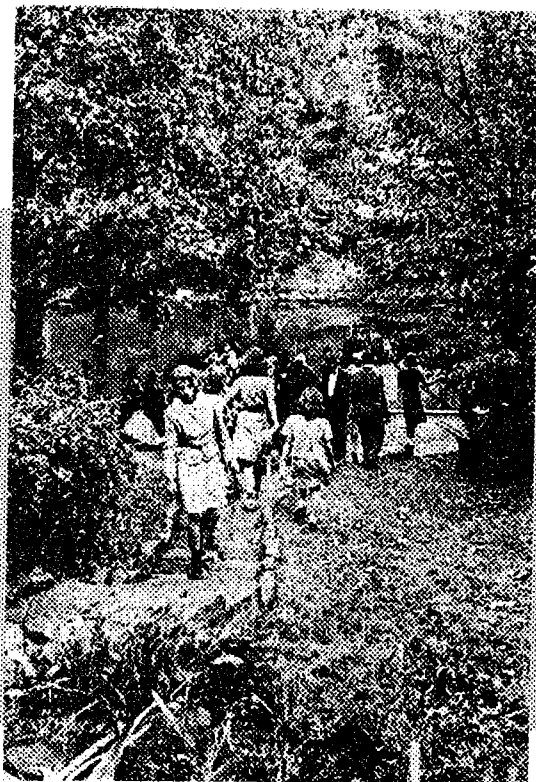
Henry F. Koch presented the property which became a part of Camp Koch to the Evansville Girl Scout Council in early October, 1941.

The day of the first Open House was a gorgeous one for the middle of October and those who attended were dressed in "Sunday best." Visitors were awed by the beautiful summer home, a large spring-fed lake, and the rocky, heavily-wooded area.

While some changes have been made, basically the camp remains the way many enjoyed it on that October day. Some changes were made due to land problems over the years, and others were initiated to make the camp more practical and accessible.

Members of the Girl Scout Established Camp Committee who worked to further the plans for Camp Henry F. Koch were: Mrs. Edward Koenemann, Jr., Chairman, A. J. Becker, Otto Kreuzberger, Earl G. Annis, R. J. Canniff, Mrs. R. J. Canniff, and Mrs. James E. Bain, the Girl Scout Commissioner.

Assisting in the plans for the new camp site were members of the Camp Committee: Mrs. Forest Condit, Mrs. Glen Ogle, Mrs. R. A. Neville, Mrs. Richard Rosencranz, and Mrs. Walt Riggs.



## Dedication Day, June 28, 1942

The formal dedication of Camp Henry F. Koch took place on Sunday, June 28, 1942. Nearly 400 people attended, including the girls in attendance at resident camp.

Rev. Armin Haeussler, pastor of St. Lucas Evangelical and Reformed Church in Evansville, where Henry F. Koch was a member, served as Master of Ceremonies at the dedication program. It was held in the flagpole area at the river end of the lake.

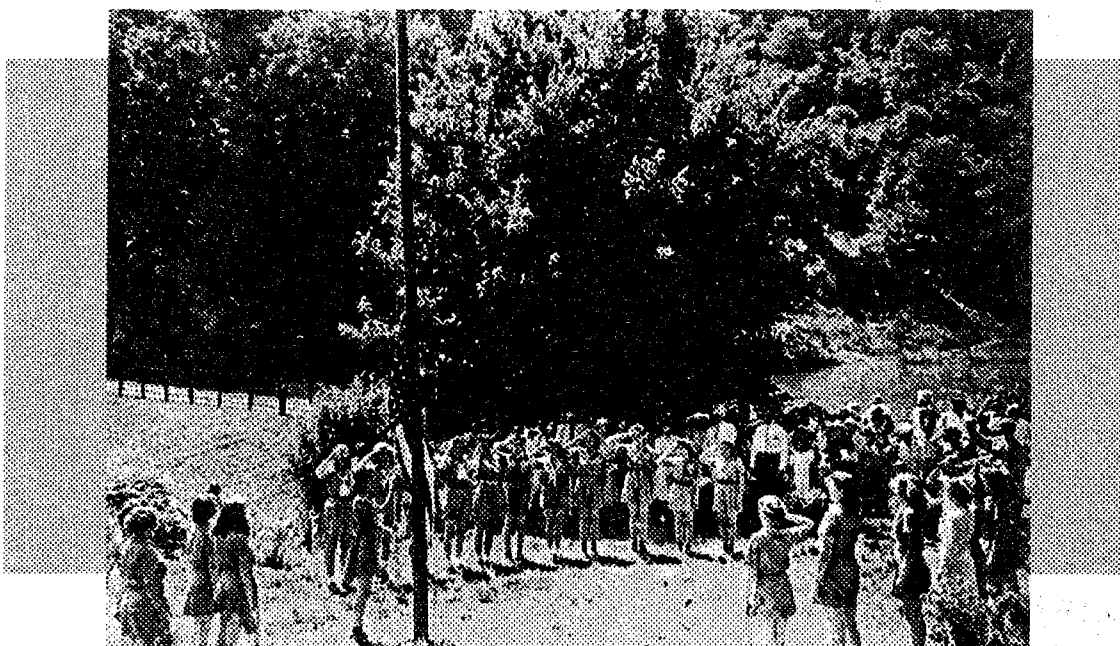
Mr. Robert J. Canniff, a member of the Girl Scout Troop Committee and a close friend of Mr. Koch's, oversaw readying the camp for the dedication.

Mrs. James Bain, Girl Scout Commissioner, officially received the camp on behalf of the Evansville Girl Scouts.

A oil portrait of Mr. Koch, painted by Larry Shane, an Evansville artist, was unveiled. Three Girl Scouts—Anna Mae Freese, Jimmie Dee Page and Maurine Norton—assisted in the unveiling.

Miss Barbara Canniff led a Color Guard of Girl Scouts including Helen Oswald, Jacqua Mae Alexander, and Caroline Schwentker. Mae Dobbins spoke on behalf of all the Girl Scouts.

Rev. Haeussler, in reviewing the career of Mr. Koch, emphasized the important things he had accomplished for his community. "He was not," said Rev. Haeussler, "confining his genius in making money just for himself. His monument is the gratitude in the hearts of our citizens."



# Camp Koch 1942

1942 - 47.7 acres

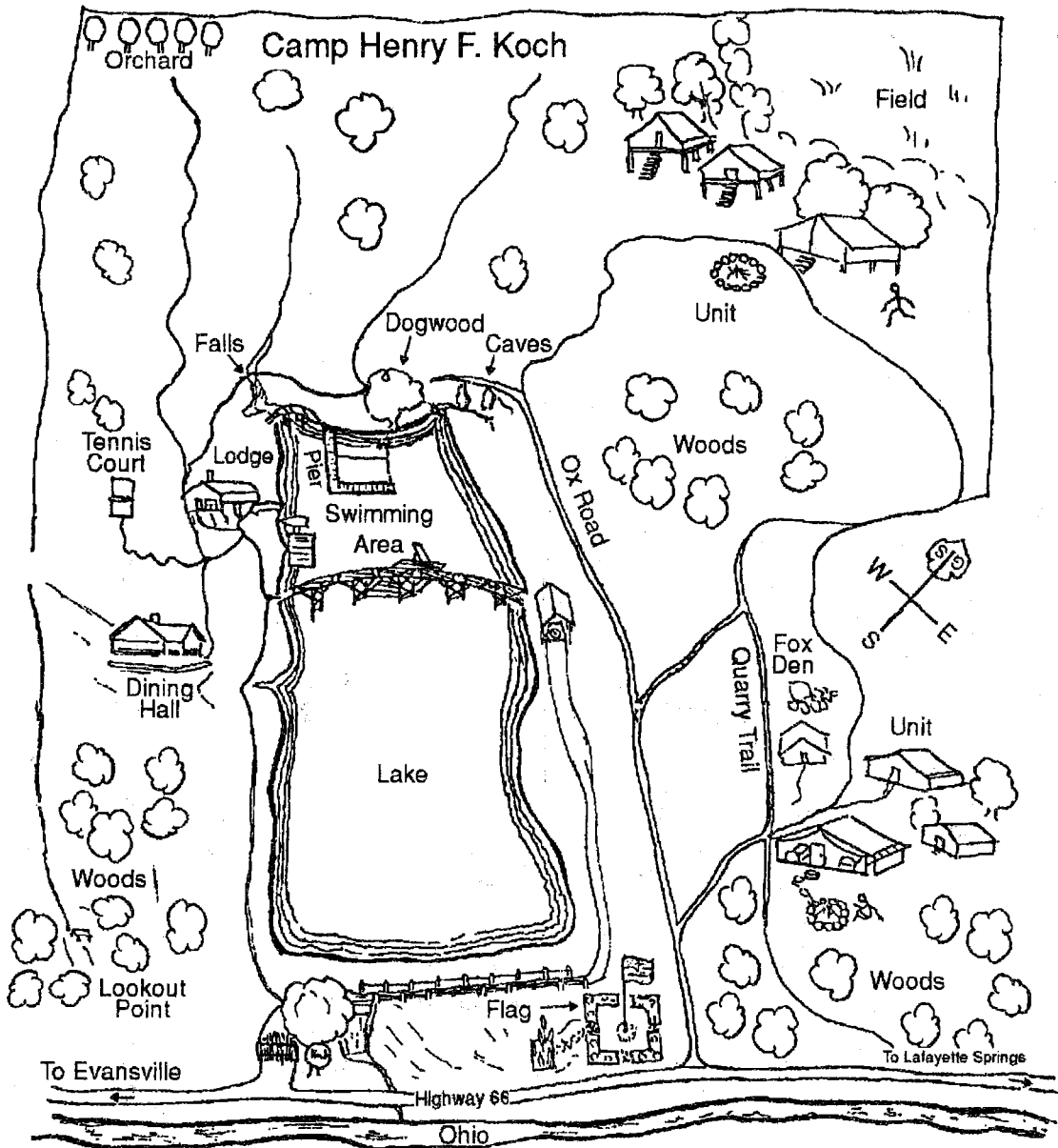
Lake - Lodge - Tennis Court - Dining Hall - 2 Camper Units

1942 - Purchased 12.1 acres of ground

1945 - Purchased 56.08

1955 - Purchased 400 acres

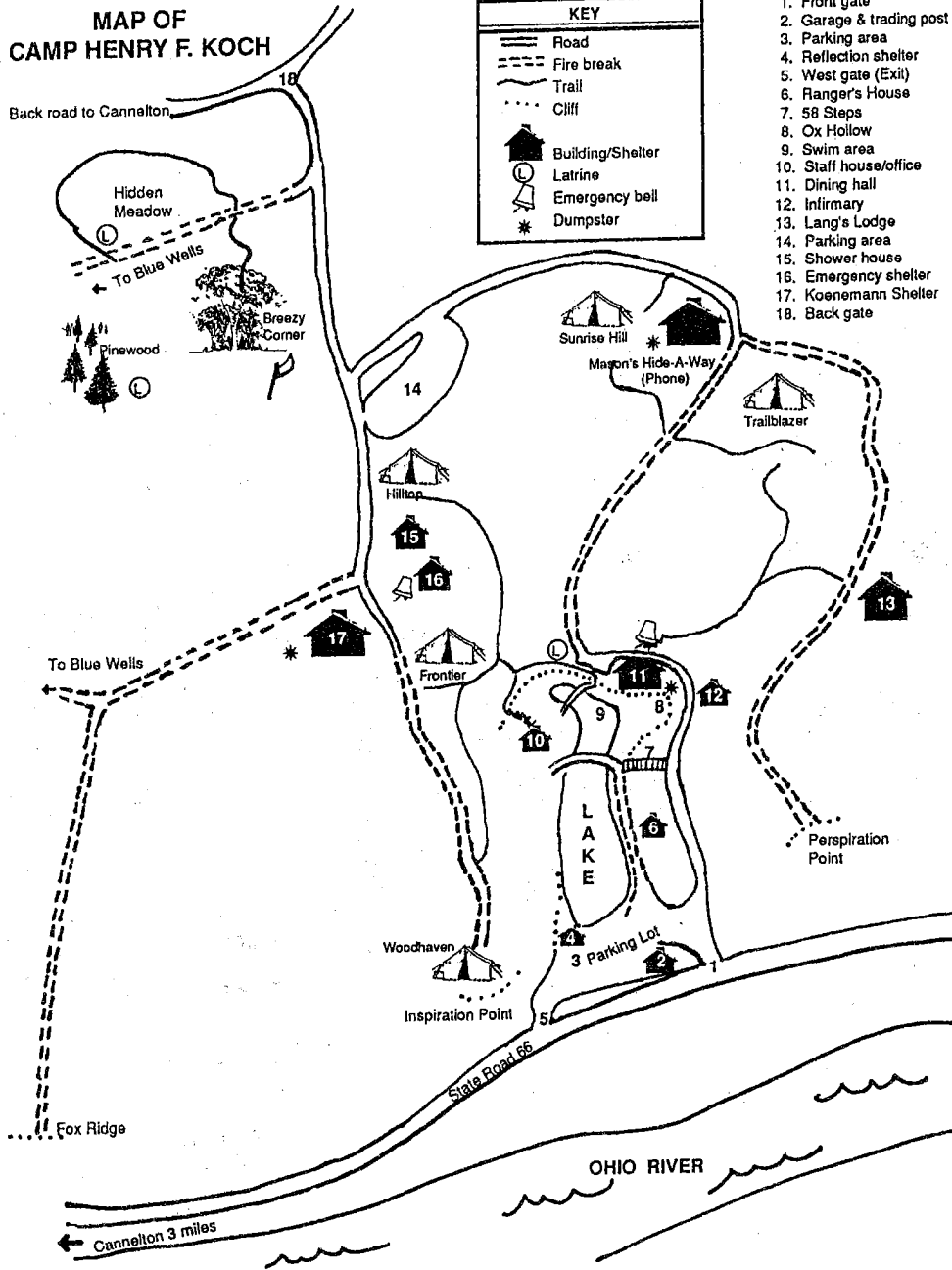
1965 - Acreage sold to the U.C. Corps of Engineers when the Cannelton Locks and Dam were built.



# Camp Koch 1992

1992 - 489 acres

Dining Hall - Ranger Home - Infirmary - Koenemann Shelter - Mason's Hide-A-Way - Hidden Meadow - Reflection Shelter - Breezy Corner - 5 Camper Units - Hot Showers - Bath House - Parking Areas - Lang's Lodge



# Camp Henry F. Koch

## Resident Camping Begins!

At Christmastime in 1941, girls who had attended resident Girl Scout camp at McCormick's Creek in the summer held a reunion. While discussing the newly acquired Girl Scout Camp Koch, Director Jenny Lind told the girls that even though they would have the needed money, there was no way the camp could be developed in time for resident camping the coming summer. The girls all shouted "Cancel McCormick's Creek for 1942. On to Camp Henry F. Koch!" The Camp Committee and the Girl Scout Council agreed with them.

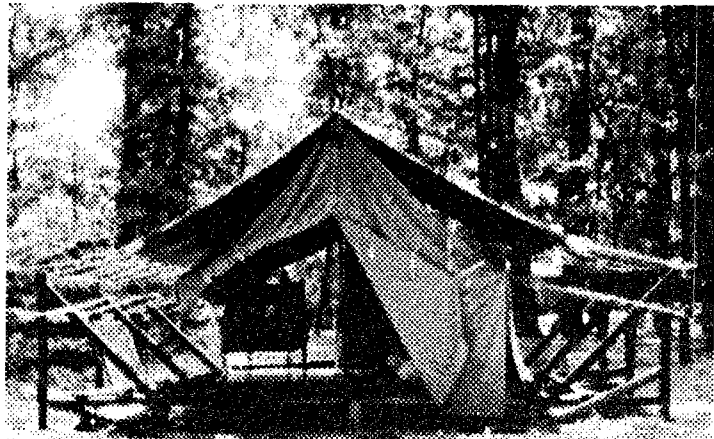
Jenny Lind reminded the girls about the primitive conditions they would encounter at Camp Koch. This only seemed to fire their enthusiasm. They were thrilled about living in tents, and thought that units which were not entirely cleared by opening day of camp could be cleared by them. If a dining hall could not be ready, they would cook in their own units. They were willing to make all sorts of adjustments.

The frantic task of getting the camp ready for the first resident camping season began. Many businesses donated rakes, kerosene lanterns, long handled spades, brooms, mops, fire extinguishers, axes, hatchets, a mailbox, and even seats for the latrines. Cash received from individuals interested in the camping venture helped to purchase other needed equipment.

Insurance was purchased, camp fees were established, and a caretaker and camp staff were hired. By June 21, 1942, Jenny Lind had agreed to serve as Camp Director; two units had been established, the dining hall and lodge were adapted, waterfront was developed and the camp folders had been distributed. Also, metal beds, tents, lumber, screening, range, and refrigerator had been secured and put in place. Food stocks were purchased.



Vintage tents



Today's tents

No mattresses had been purchased, so each girl was asked to bring a mattress tick with her. This tick was stuffed with straw for each camper's mattress.

The \$12 per week (2 weeks/\$23) registration fee covered all costs for the girls, including health examinations, transportation to camp, food (including snacks), and swimming caps.

By the end of summer, 165 girls had camped either in the Cricket or Trailblazer Units. All in all, things progressed much better than expected, and campers looked forward to the 1943 season.

# Camp Henry F. Koch

## Getting to Camp Koch

From 1942 until 1971, the McClary Bus Company was hired to bring Girl Scouts to camp. In 1971, it became the responsibility of parents to get girls to and from camp.

## Getting Around At Camp Koch

In the early years, supplies and luggage were delivered throughout the camp in a two-wheeled cart equipped with rubber tires and pulled by "Jack" the mule. Each year the camp budget included money for Jack's food and care. In 1953 he became ill and was no longer able to pull his cart, so he was sold to a nearby farmer for \$15. The farmer nursed Jack back to good health and Camp Koch's mule spent his last days in a large pasture with a barn for his shelter.

After Jack, an old used car was purchased and used to get around at camp. In 1948 the road in the camp was upgraded and a new station wagon was purchased. The next year a trailer was added for use behind the station wagon.

In 1954, a camp Jeep was purchased which was well-suited for the terrain.

Getting luggage and sleeping bags around to camping units continues to be a big job. Moving cots and mattresses into winter storage also requires great effort.



Jenny Lind, seasonal ranger, and Jack

# Camp Henry F. Koch

## Natural Treasures at Camp Koch

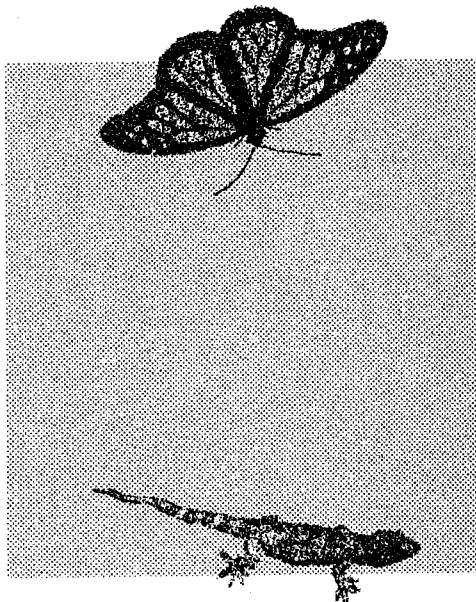
The wooded areas of Camp Henry F. Koch blend into the rocks, springs and small caves in a majestic way. Trees include dogwood, redbud, black walnut, hickory, butternut, chestnut, elm, maple, oak, beech, tulip, and poplar. Sumac and gum trees add color to the autumn season along with the hardwoods' reds, yellows, oranges, and purples. Pine and cedar trees are also found at Camp Koch. Some of these are original trees but at least 1000 have been planted at different times by campers. During a storm in the early 60's the state's largest dogwood tree was destroyed. This tree grew at the Dining Hall-end of the lake.

Wildflowers grow in abundance in various areas of the Camp. Some of these are on the endangered species list.

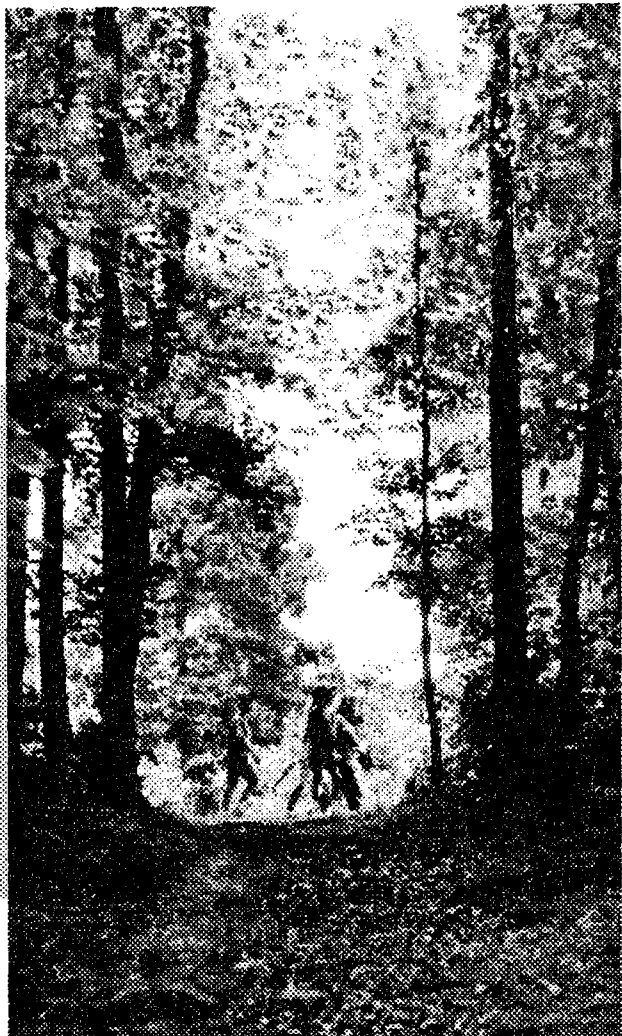
Many racoons and chipmunks live at camp along with a few foxes. The deer population is increasing; squirrels and rabbits are in evidence.

There are turtles, crayfish, and fish, in or around the lake.

Bees, wasps, hornets, ticks, mosquitoes, snakes, spiders, and field mice all are found at Camp Koch.



Many species of birds make their homes among the trees and illusive bats can be seen at times, too.

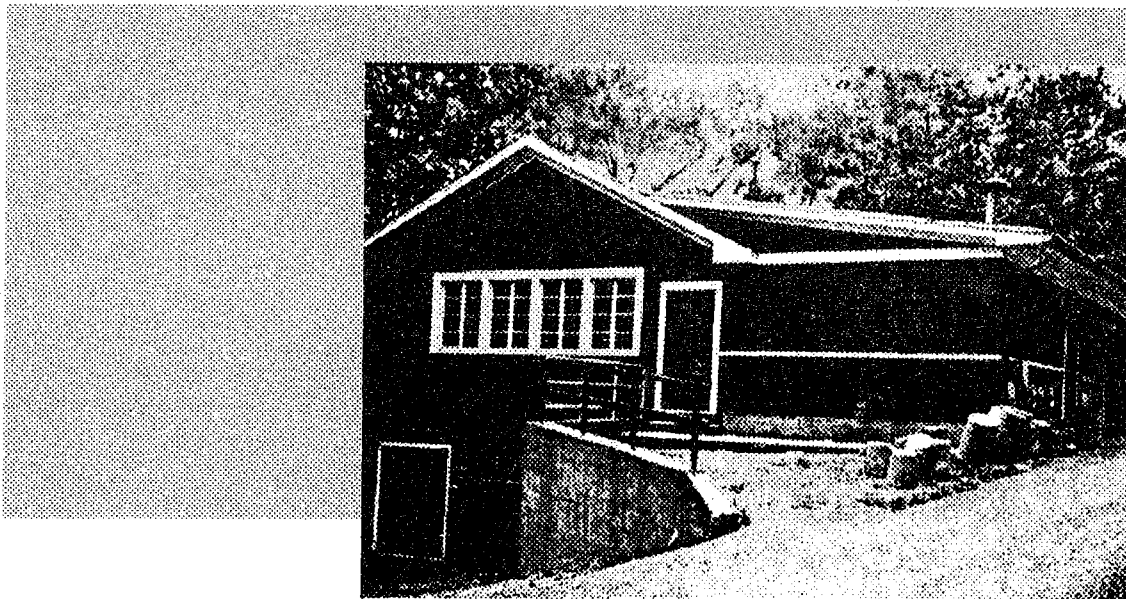
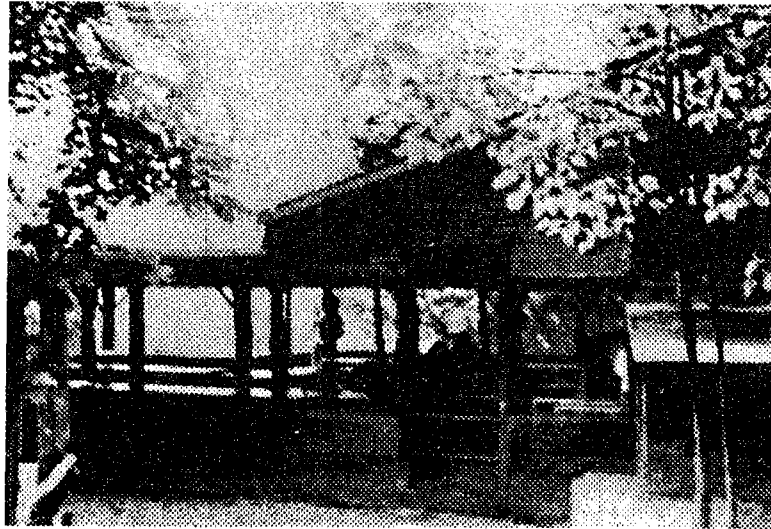


# Camp Henry F. Koch

## The Dining Hall

The shelter pictured at the right served as a dining hall from 1942 until 1948. Attendance at camp during those years averaged 250 girls. With that many campers it was difficult to fit everyone into the dining hall for meals, so Henry F. Koch commissioned Earl O. Warweg to design a building which was larger and two stories high. A recreation room was designed for the basement and a brick fireplace was built on both floors. This was another gift to the Girl Scouts from Mr. Koch.

In 1955 the recreation room in the basement was remodeled and made into four rooms and a restroom.



The second dining hall.



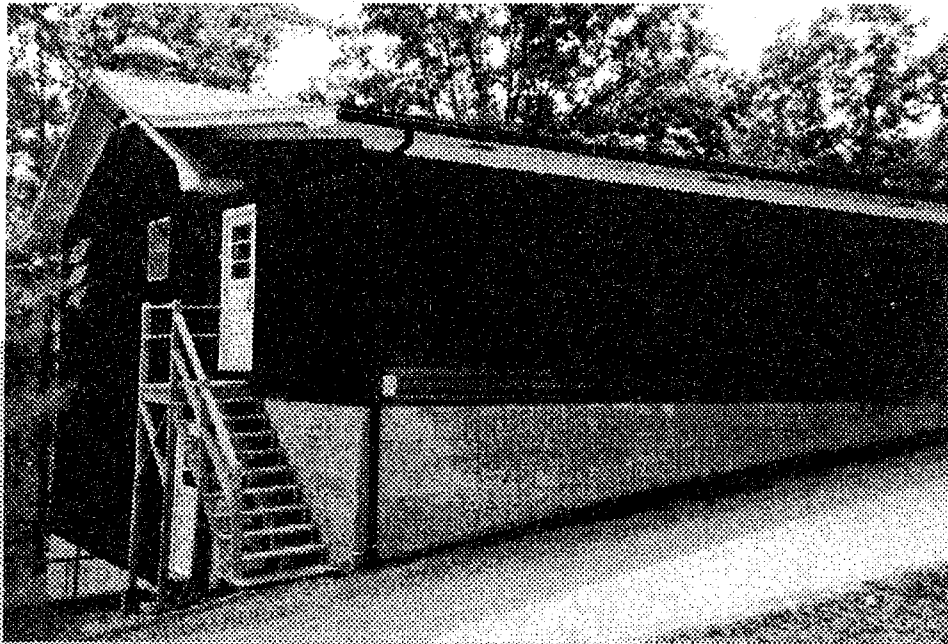
# Camp Henry F. Koch

## The Dining Hall

During the years between 1948 and 1973, several changes in the kitchen and eating area of the dining hall were made and the kitchen was enlarged. However, summer camp attendance had risen to between 350 and 400 campers and still more room was needed.

A new addition was completed in 1973 which not only provided the needed space in the dining room and kitchen but in the basement, as well. Today the new area in the basement is the camp library and the original front area now serves as the craft room.

There is also "Stella's Room", where "Stella", the giant hotwater heater that supplies the water to "Hobart", the dishwasher, is located. This area is also used to store supplies during the winter months.



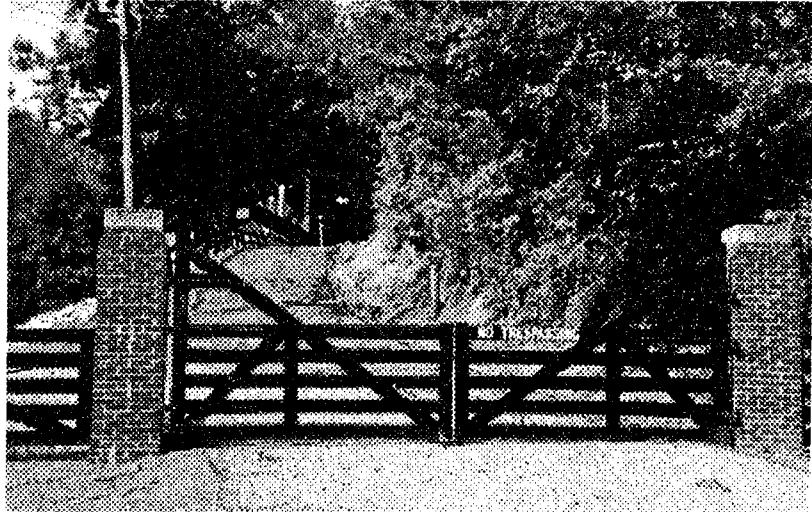
# Camp Henry F. Koch

## The Main Entrance

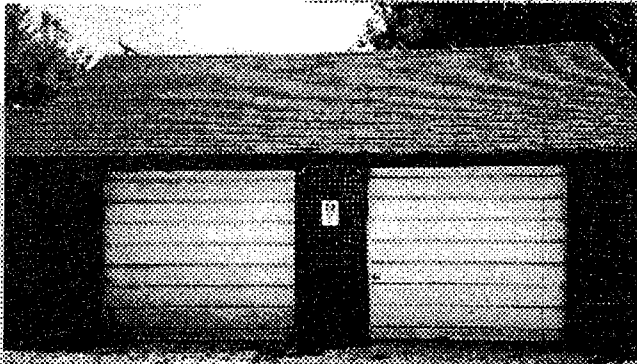
The gate and gate house at the main entrance of the camp was built in 1949. Two years before, an entrance and road to camp was built off Highway 66. The gate house served as the camp office for many years. It is currently used as the trading post.

Henry F. Koch also made arrangements for the two-car garage to be built. Today this garage offers a secure waiting facility for campers who are leaving camp during inclement weather.

The chain link fence was first erected along the Camp Koch front entrance in 1968.



Garage



Main Gate

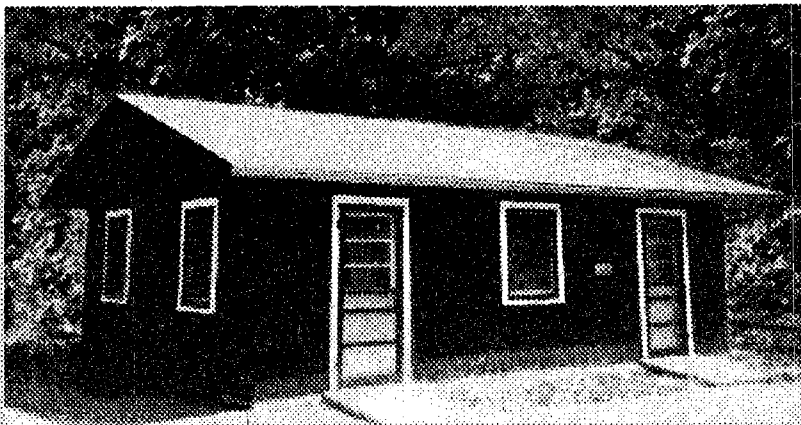
Gate House



# Camp Henry F. Koch

## The Ranger's Home

The Evansville Girl Scout Council needed a fulltime Ranger living on Camp Henry F. Koch's grounds year round; therefore, plans were made for a house to be built. The house was completed in 1951 and Mr. Arthur Mason, Camp Ranger, and his wife, Nellie, moved in. In 1961 another room was added to the lower portion of the home and in 1968 the home got a major facelift. Recently, a Franklin stove was installed in the living room and other minor changes were made.



## The Infirmary

Through the years the infirmary has been relocated several times. Early on, a tent was used to house ill campers. Later, the front part of the basement below the dining hall was designated "The Infirmary." Today's infirmary was built in 1961. It has three rooms and a bath.

# Camp Henry F. Koch

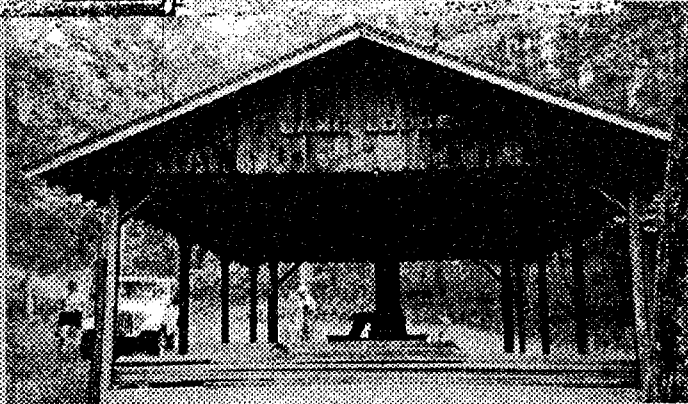
## Koenemann Shelter

Koenemann Shelter was built in 1960-61 to encourage year-round troop camping. It has two large rooms and double fireplaces. At either end a large concrete-floored patio provides play and work areas.

Koenemann Shelter was named to honor Ed and Virginia Koenemann, who gave long years of service to the Council. The Koenemanns both continued as volunteers after they assisted with the purchase of the camp. They helped erect tents and build wash houses. Since both were excellent swimmers, they spent many hours diving into the lake to locate trees and other debris that might be hazardous to swimmers or divers.

Mrs. Koenemann served as a leader for the first Mariner Troop in Evansville. She was also a Board Member, and Camp Committee Chairman. Mrs. Koenemann's philosophy—that Girl Scouts should spend as much time as possible in the out-of-doors—led her and her family to spearhead the drive for many improvements at Camp Koch.

Koenemann Shelter—a campsite for all seasons.



**Lang's Lodge**

Lang's Lodge was built in the mid-50s as an arts and crafts center for Camp Koch. A kiln was installed to fire the pottery which campers made from the clay deposits in the area. The Lodge was named for Wilma Lang, Executive Director of the Council, who was also Director of Camp Koch for two years.

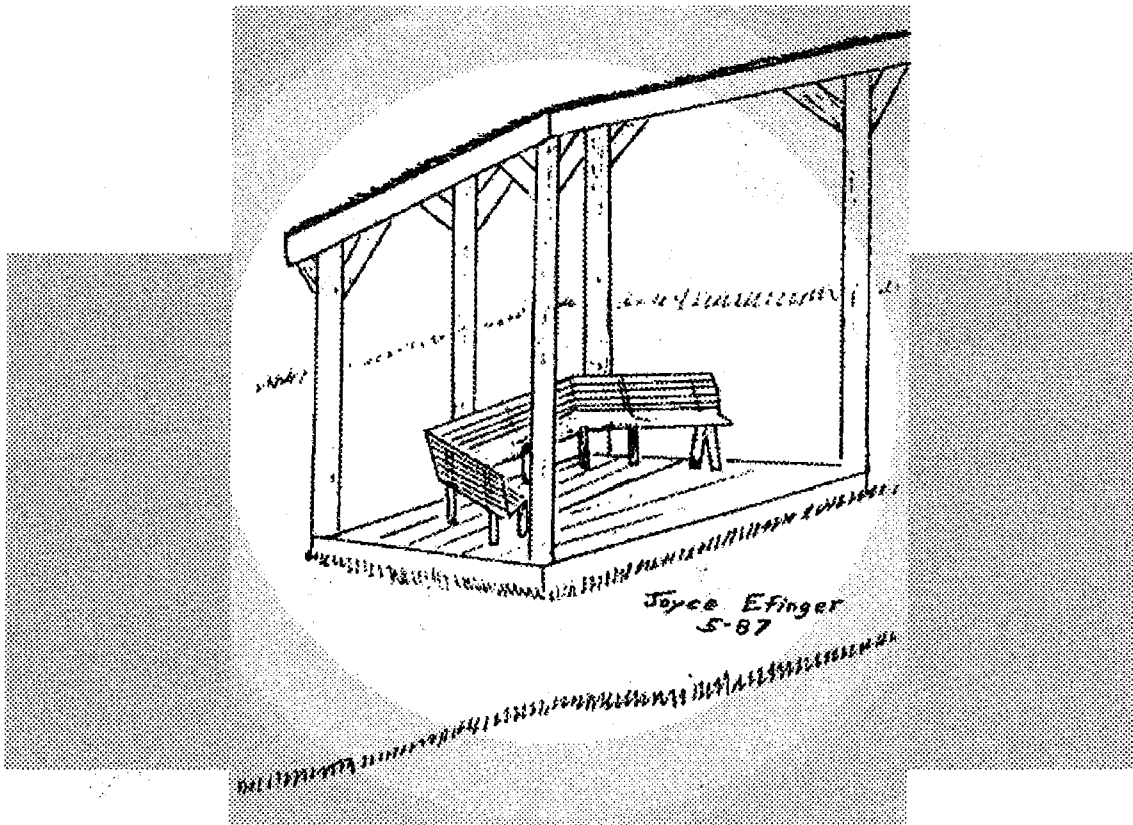
# Camp Henry F. Koch

## Memorial Reflection Shelter

After the death of Art Mason, Camp Koch's first resident, year-round Ranger, the Camping Committee of Raintree Girl Scout Council proposed that a memorial to him be erected as a tribute to the more than twenty-five years of service he gave to the Girl Scouts and to Camp Koch.

Joyce Efinger designed the Memorial Reflection Shelter to be a simple straightforward structure, in keeping with the natural setting. The memorial was built by contractor Elmer Goffinet in March, 1987 and dedicated May 31, 1987.

Building of the memorial was funded by past staff members and former campers who knew and loved Art Mason.



# Camp Henry F. Koch

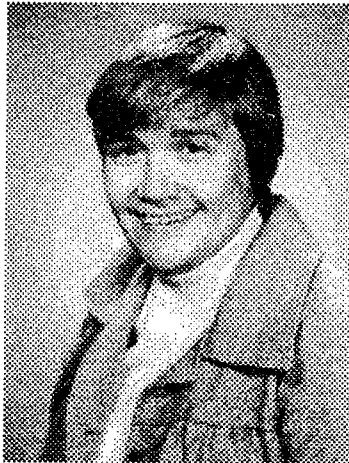
## Resident Camp Directors



**Jenny Lind**, who now lives in Madison, Wisconsin, served as the first Director of Camp Henry F. Koch in the summer of 1942. She was also director when resident camping was conducted at McCormick Creek.

Following Jenny Lind were:

- 1943 ..... Thelma Post (Tuck)
- 1944-45-46 ..... Jean D. Adamson
- 1947-48-49 ..... Mary G. Paget
- 1950 ..... Wilma Lang (Lani)
- 1951-52 ..... Ann Atwell (Jay)
- 1953-54 ..... Nanette Wootton
- 1955 ..... Karleen Rosaaen
- 1956-57 ..... Martha Fitzgerald (Marty)
- 1958-59-60 ..... Helen Anderson (Skeet)
- 1961 ..... Harriet Jones (Jonsey)
- 1962-63 ..... Ann Parrish (Misty)
- 1964 ..... Helen Anderson (Skeet)
- 1965-66-67 ..... Mary Lu Hafele (Lu)



**Barbara Jones (Jonsey)** served as Camp Director from 1968 through 1974 — longer than any other director to date.

Following "Jonsey"

- 1975 ..... Jan May (Jay)
- 1976 ..... Sara Yingst (Say)
- 1977 ..... Marilee Keller (Marilee)
- 1978-79-80 ..... Cassandra Major (Cassie)
- 1981-82-83 ..... Marianne Bradford (Skeeter)
- 1984 ..... Sue Sullivan (Sully)
- 1985 ..... Mary Jo Zachow (Sparks)
- 1986 ..... Sandy Stoen (Stitch)



**Beth Heil (Alvin)** is the present Director at Camp Koch. Alvin has served as director since 1987.

# Camp Henry F. Koch

## Camp Koch Rangers

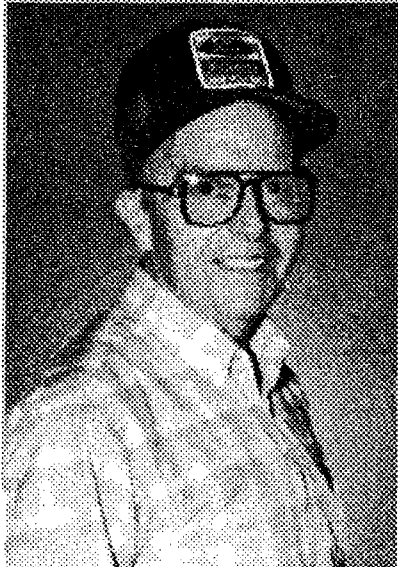


1942-43-44 ..... Mr. Charles Keating  
1945-46-47 ..... Mr. Charles Keating (winter)  
Mr. Badger (summer)  
1948-49-50 ..... Mr. Charles Keating (winter)  
Mr. Dauby (summer)

### Art Mason

On May 1, 1950, Art Mason became the first fulltime Ranger. He remained as Ranger of Camp Koch for more than 25 years.

1974 ..... Mr. Boyd Bosaw  
(Art Mason served as his consultant.)



### James Efinger

Mr. Jim was hired as Ranger in May, 1975 and still serves in that position.

# Camp Henry E. Koch

## The Camp Nurse

Through the years many dedicated women have served resident campers as the Camp Nurse, but none served Camp Koch longer than **Sister Josepha Book**, who served each summer from 1970-1987.

Sister's proud German heritage included a frugal side. Former campers still remember that her "watered Calamine Lotion" and cut-in-half Band Aids solved many "medical emergencies" at camp.

They also remember that Sister had a jar of wrapped hard candy labeled "Homesick Pills" which she kept in the refrigerator. Homesick campers found them very effective medicine.





# Camp Henry F. Koch

## Camp Koch's Cooks

**Marie Allen** began cooking for the camp in 1942 and continued through 1949. During World War II, Camp Koch received an "AA-5" rating, which made it eligible for government allotment food. Girls were also asked to bring their special food stamps along to camp during this time. The stamps were used to purchase sugar, flour, and other government commodities.

**Tessie Moser** began cooking for the Camp in 1959 and continued through 1965. She delighted everyone with "Tessie's Coffee Cake."

---

## Tessie's Coffee Cake

---

This coffee cake, which was served at Camp Koch when Tessie was the Head Cook, is well-remembered by campers who enjoyed it.

### Coffee Cake .....

Mix together:

- 4 cups flour
- 1 1/3 T. Baking Powder
- 1 1/2 cup sugar
- 1/2 T salt

Mix the following and add to dry ingredients:

- 2 eggs
- 1 1/2 cup milk
- 1 cup melted shortening

Mix thoroughly. Pour into 15 1/2 x 9 1/2 pan.

### Topping .....

1 stick (4 oz.) melted butter—pour over batter in pan.

Sprinkle with the following sugar mixture:

- 1 1/4 cup sugar
- 2 1/2 T. flour
- 1 1/2 T. cinnamon
- 1 tsp. salt

Bake 375° for 25 minutes.

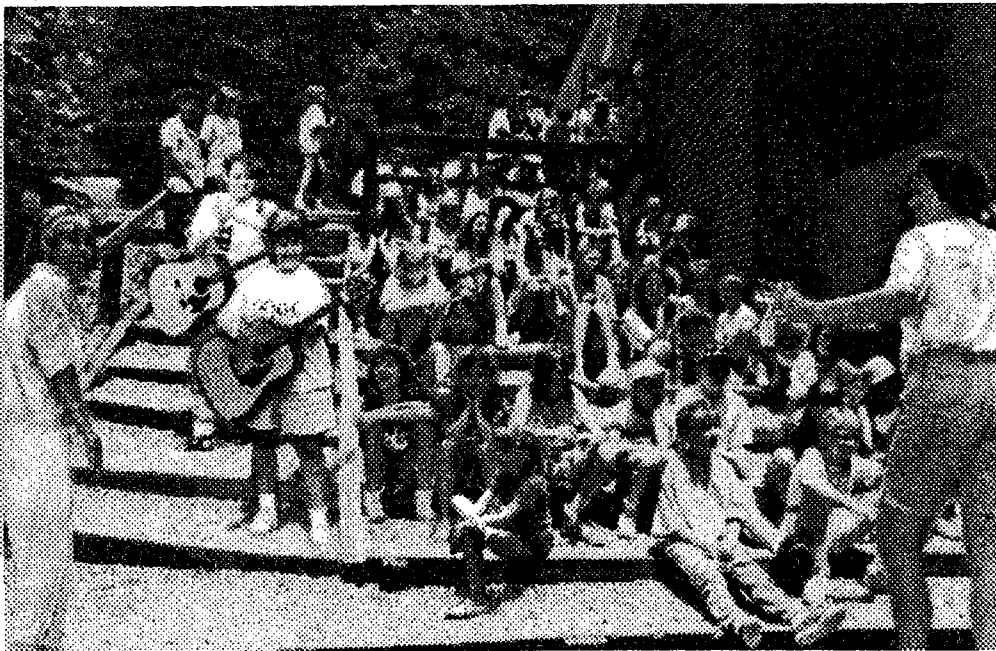
# Camp Koch Song

**Chorus** Hey, ho, this I know I'll love Camp Koch until I'm old  
Hey ho and when I'm old the memories now will still be told.

**Verse 1** This land of mine on banks so high  
With hills that reach up to the sky  
The lake with sunlight on its waves  
The waterfalls and cool dark caves

**Verse 2** I will remember campfires bright  
The velvet sky and stars at night  
I will remember hiking trails  
To Perspiration and Blue Wells

**Verse 3** We rise at morn when day begins,  
To learn new songs and make new friends  
The camper's joy, the counselor's smile  
Will live within our hearts awhile



## Did You Know?

**That** approximately 16,500 girls have had resident camping experiences at Camp Henry F. Koch. Thousands more have enjoyed some type of camping at Camp Koch during Good Turn Weekend, troop camping, and other special events. (One spring, 100 girls attended Good Turn Weekend.)

**That** in 1942, the first year of resident camp, there were 165 campers. The largest number of girls, 499, attended resident camp in 1980.

**That** in the beginning there were 2 units which could accommodate campers. Today 5 units are now possible. The number of units used is decided by the number of girls participating each year.

**That** girls may enroll in the Counselor in Training I or II program where they expand their knowledge of leadership, communication, and children. They spend time working directly with the campers, under the supervision of the Unit Counselors.

**That** girls who have completed the Counselor in Training I and II program may enroll in the Junior Counselor Program. Girls attend the pre-camp training session and choose a two-week session where they work directly in a unit.

**That** beginning in 1944, African-American Girl Scouts and their counselors attended a special session at Camp Koch. Girls from Louisville, Kentucky, St. Louis, Missouri, and Indianapolis and Evansville, Indiana attended.

**That** in 1952, several girls started a small fire that was quickly extinguished. The incident was followed by a convincing talk from the Fire Marshal regarding fire safety.

**That** through the years, Units have had such names as Trailblazer, Crickets Cliff, Whippoorwill, Pioneer, Hilltop, Frontier, Primitive, Woodhaven, Blue Wells, and Sunrise Hill.

**That** when the Camp Staff entered the Staff House in 1988, those who had been counselors before exclaimed "I can't believe it." Major remodeling had been completed and it was beautiful!

**That** Camp Koch has a special plan to have trees removed or thinned out where too many trees are growing.

**That** for many years the only entrance to Camp Koch was the front gate.

**That** the tradition of addressing counselors by a camp name instead of their real name was begun in the 1940s, when it was considered bad manners for a child to address an older person by her given name. Many adult women, to this day, know the counselors they met at Camp Koch only by "Twigs" or "Buzz."

**That** a 50-year pictorial history of Camp Koch is located in the Raintree Council Office. Scenes depicting events during its first 50 years are mounted on 11 x 14 posters.

## Did You Know?

**That** in 1949, a Camp Stamp Savings Plan was started as a means of helping girls save money so they could attend camp. Each stamp was worth 10 cents, and one year, 15% of the campers used stamps to pay their fees.

**That** in 1960, a Campership Committee was appointed by Raintree Girl Scout Council so girls could apply for financial assistance to attend camp.

**That** in 1979, Cookie Dough was developed to help girls pay for resident camp. Girls sell boxes of Girl Scout cookies and receive sales awards according to the number of boxes sold. Today this Cookie Dough may be used to pay for day camp, resident camp, or membership registration fees. Cookie Dough may also be used for Service Unit program event fees, for Wider Opportunities, and fees of wider-than-troop Girl Scout program opportunities. Sisters may combine Cookie Dough and Cookie Dough may be accumulated up to three years.

**That** over the fifty years, approximately seventy-five different programs have been offered during camping sessions at Camp Henry F. Koch — some with exotic names like Calico, Candlelight and Cornpone; English Horsemanship; Water Wonderland; Video Ventures, Down Under, and Adventure Unlimited.

**That** more than 500 tree seedlings have been planted by girls, usually during Good Turn Weekend.

**That** the elevation of Camp Henry F. Koch ranges from 230 feet above sea level at the lake to 680 feet (Fox Ridge) the highest point.

**That** through the years, international visitors have served as counselors at Camp Koch. Some of these were: Ruth Ruch (Aunt Ruth—Germany), Carmen Englert (Brazil), Fraulein Johanna Bauer (Jo—Germany), Marlene Hanni (Amie—Switzerland), Marja-Lsena Paatonan (Maela—Finland), and Ester Haenni (Esther—Switzerland).

**That** 4 different swimming docks have been built. The first one was left by the Lehmans. After that, there was an “L” shape, a wooden “A” shape, and the last, an all-aluminum “block A” shape.

**That** the first tents were screened. By 1959, tents were no longer screened.

**That** today the girls have many interesting places at Camp Koch for activities. Besides the lake, which provides swimming, boating, and diving, there is Hidden Meadow, a sports area, complete with softball field and bleachers, Pinewood, Breezy Corner, Blue Wells, Lang’s Lodge, and, of course, many trails and roads just for hiking. Campers may also enjoy the peace and quiet of the camp’s beauty by sitting in the Memorial Reflection Shelter.

# "I Love Camp Koch" Club

## Membership Buttons



The "I Love Camp Koch" Club was established by Jan Davies, Executive Director of Raintree Girl Scout Council, during the 1986-87 Girl Scout program year.

Its purpose was to provide a way for individuals to demonstrate their ongoing care and concern for Camp Henry F. Koch by financially supporting its programs and operations. The Club Members' investments help to insure that Camp Koch will serve future generations of Raintree Girl Scouts.

Framed documents, listing the "I Love Camp Koch" Club founding members, are displayed in Raintree Council's office, and at Camp Koch. Bill Kenney lettered both documents with elegant calligraphy.



# "I Love Camp Koch" Club Founding Members

Pam Allen  
 Billie Ashby  
 Bruce and Carol Baker  
 June and Amy Barron  
 Theresa Bault  
 Linda Baumgart  
 Cheryl Bingemer  
 Debbie Brosmer  
 Jack and Carol Cox  
 (in memory of Florence Otloe)  
 Jan Davies  
 Ken and Marg Dennis  
 Robin Diefenbach  
 Annette Durcholz  
 Brenda Durcholz  
 Jane Durcholz  
 Jennifer Durcholz  
 Joyce and Jim Efinger  
 (in memory of Florence Otloe)  
 Janet Fox  
 Annette Frette  
 Mary Lou Froehle  
 Jane Gasaway  
 Julie Gee  
 Sharon Gillen  
 Nancy Glackman  
 Mary Pelle Goebel  
 Ruth Gorman  
 Misty Gregory  
 Allene Hazeltine  
 Evelyn Hedges  
 Beth Heil  
 Dr. W.B. Hibbitts  
 Donna Hodge  
 Becky Hoffman  
 Kathleen Hoffman  
 Janis Hollingsworth  
 Donna Hook  
 Susan Huck  
 Sandi Inman  
 Tara Kieffner  
 Don and Teresa Kiesel  
 Cecile Klamer  
 Pat Klueg  
 Joan Knies  
 Beatrice Koch  
 John and Wanda Koch  
 Linda Kuhlenschmidt  
 Beth and Halleck Lamar  
 Shelley and Stacy Lawalin  
 Diane Legler

Mike and Linda Letterman  
 Mag Lindsey  
 Margherita Loudon  
 Carolyn Lucas  
 Valerie McKinney  
 Kathy Mehringer  
 Phebe Minton  
 Suzanne Nonte  
 Patty Nordhoff  
 Ed and Corine Oing  
 Joy Phillips  
 Barbara Polk  
 Jane Potter  
 Debbie Powers  
 Erma Purviance  
 Bonnie and Kent Quirey  
 Theresa Rawlings  
 Betty Rice  
 Celia Rizen  
 Cheryl Rudolph  
 Cindy Russell  
 Martha Schaefer  
 Stefani Schmacker  
 Tracy Schmitt  
 Rosemarie Schnarr  
 Nat Schofield  
 Mrs. Edwin (Bettie) Scott  
 Karen Selby  
 Ken Settle  
 Betty Spalding  
 Bettye Statham  
 Marlyn Treberg  
 Margaret K. Vogel  
 Deborah Wagner  
 Suzanne Weigel  
 Mary Dawn White  
 Faye Willis  
 Jim Willis  
 Mary Willis  
 David Woll  
 Janet Woodhull  
 Steve Worthington  
 Marie Wynn

## Service Units

North Dubois  
 South Dubois  
 Spencer County  
 Far North Vanderburgh  
 North Warrick

## Other

Arnold Habig Foundation  
 Spencer County React  
 Kroger Store-Tell City  
 JARCO Employees

## Brownie Troops

Troop 8 - Lamar Home  
 Economic Club  
 Troop 15  
 Troop 23  
 Troop 46  
 Troop 60  
 Troop 76  
 Troop 128  
 Troop 161  
 Troop 189  
 Troop 208  
 Troop 209  
 Troop 213  
 Troop 232  
 Troop 233  
 Troop 267  
 Troop 314  
 Troop 346  
 Troop 380  
 Troop 386  
 Troop 430  
 Troop 483  
 Troop 526

## Junior Troops

Troop 69  
 Troop 71  
 Troop 97  
 Troop 122  
 Troop 303  
 Troop 340  
 Troop 482

## Cadette Troops

Troop 83  
 Troop 166  
 Troop 300  
 Troop 403

## Other Troops

Dale Girl Scout Troops

# Camp Staff

The following pages contain the names of those who served on the Camp Henry F. Koch resident staff over the years. The names were taken from staff pictures and staff lists. We regret that some of the information has been lost; anyone who can help us "fill in the blanks" is asked to call the Raintree Council Office.

## 1942

**Jenny Lind**, Director  
**Beverly Ayers**  
**Martha Kleymeyer**  
**Marian Redman**

## 1943

**Thelma Post** (Tuch),  
 Director  
**Louise Allen** (Penny)  
**Marie Allen** (Marie)  
**Beverly Ayers** (Rickey)  
**Ruth Cook** (Trothie)  
**Natalie Eckland** (Kit)  
**Gertrude Harris** (Cotton)  
**Margaret Hill**  
**Margaret Jean Hoffman**  
 (Birdie)  
**Dorothy Jache** (Dosh)  
**Martha Kleymeyer**  
 (Buch)  
**Lorriane Morris**  
 (Marsey)  
**Emma Jane Raybould**  
 (Judy)  
**Marian Redman** (Reon)  
**Josephine Riely** (Jo)  
**Anne Stueck** (Sundy)  
**Marge VanDuern**  
 (Splash)  
**Jane Iris Willey** (Pan)  
**Marie Wynne** (Winnie)

## 1944

**Jean Adamson**  
 (Skipper), Director  
**Virginia Burton**  
**Mary Helen Espenlaub**  
**Dorothy Garner**  
**Barbara Hopkins**  
**Mrs. John Lindsay**  
**Mrs. Robert Munson**  
**Mrs. Fred Parrish**  
**Alice Powers** (Spry)  
**Ruth Shane** (Van)  
**Sylvia Swanson** (Swany)  
**Elvira Vidano** (Tiny)  
**Katherine Waldelach**  
**Mabel Webb**

## 1945

**Jean Adamson**  
 (Skipper), Director  
**Virginia Burton**  
**Kay Edwards**  
**Virginia Fly**  
**Dorothy Garner**  
**Elizabeth Hill**  
**Shirley Nire**  
**Carol Nolhr**  
**Alice Powers** (Spry)  
**Maryrose Roach**  
**Gladys Rohde** (Jolly)  
**Ruth Shane** (Van)  
**Dorothy Southwell**  
**Ester Spruce**  
**Sylvia Swanson** (Swany)  
**Elvira Vidano** (Tiny)

## 1946

**Jean Adamson**  
 (Skipper), Director  
**Virginia Boschert**  
**Virginia Burton**  
**Virginia Fly**  
**Dorothy Garner**  
**Margaret Hill**  
**Virginia LaMaster**  
**Alice Powers** (Spry)  
**Sue Scarrit**  
**Ruth Shane** (Van)  
**Ester Spruce**  
**Sylvia Swanson** (Swany)  
**Elvira Vidano** (Tiny)  
**Mabel Webb**  
**Evelyn Wilson**

## 1947

**Mary Paget**, Director  
**Dorothy Battles**  
**June Buchanan**  
**Margery Erganbright**  
**Alice Fuchs**  
**Lucille France**  
**Robertta Gettinger**  
**Dorothy Horstmann**  
**P. Ann Jones**  
**Martha Kleymeyer**  
**Lorine Martin**  
**Carleonette Metcalf**  
**Mary E. Rayburn**  
**Jean A. Roberts**  
**Phyllis A. Weaver**

## 1948

**Mary Paget**, Director  
**Alice Arnold**  
**Ann Atwell**  
**Margaret Bass**  
**Dorothea Battles**  
**Elizabeth Bell**  
**June Buchanan**  
**Mrs. Lydia Cable**  
**Barbara Canniff**  
**Dolores Duda**  
**Adela Earley**  
**Virginia Ferrel**  
**Doris Jean Finke**  
**Mary Martha Fitzgerald**  
**Lucile France**  
**Alice Fuchs**  
**June Gibson**  
**Nancy Hawlick**  
**Pat Hayden**  
**Wanda Koeurtel**  
**Judith Leon**  
**Violet Redman**  
**Billie Jo Renner**  
**Rosalind Robinson**

## 1949

**Mary Paget**, Director  
**Elizabeth Buck** (Woody)

# Camp Staff

## 1950

**Wilma Lang** (Lani),  
 Director  
**Ann Atwell** (Jay)  
**Johanna Bauer** (Jo)  
**Ann Beal** (Wendy)  
**Virginia Berry** (Skip)  
**Helen Lu Ferslev**  
 (Cindy)  
**Margaret Goffinet**  
 (Buzzy)  
**Carolyn Harmon** (Kit)  
**Barbara Hoiney** (Peb)  
**Mary Ruth Holt** (Tary)  
**Jane Kardokus** (Jock)  
**Elizabeth Lockwood**  
 (Woody)  
**Mary Jean Lockwood**  
 (Lucky)  
**Martha Ann Logsdon**  
 (Spek)  
**Joanne McCarty** (Mac)  
**Mrs. Tessie Mosier**  
**Peggy O'Hara** (Twig)  
**Patricia Orr** (Rip)  
**Mary Ruth Ruch**  
 (Aunt Ruth)  
**Francille Schymik** (Nod)  
**Ann Steckler**  
**Ann Woertz** (Skoo)

## 1951

**Ann Atwell**, Director  
**Agnes Anslinger**  
**Mary Ruth Barnett**  
**Phyllis Berger**  
**Julia Colvin**  
**Mrs. Mildred Conover**  
**Juanita Cook**  
**Helen Lu Forslov**  
**Mrs. Elsy Goffinet**  
**Carolyn Harmon**  
**Doris Heller**  
**Wilma Kissel**  
**Mary Kay Lewis**  
**Mary Jean Lockwood**  
**Carol Lundquist**  
**Kathryn Mallett**  
**Mr. Arthur Mason**  
**Mrs. Tessie Mosier**  
**Elizabeth Reesor**  
**Ann Louise Steckler**  
**Mrs. Gordon Thompson**  
**Shirley Whitlodge**  
**Charlotte Williams**  
**Ann Woertz**  
**Nan Wootton**  
**Ann Zimmerman**

## 1952

**Ann Atwell**, Director  
**Marie Allen**  
**Roberta Becker**  
**Julie Blackwell**  
**Elizabeth Buck** (Woody)  
**Doris**  
**Carolyn Harmon**  
**June Heilman**  
**Elizabeth Lockwood**  
**Mary Jean Lockwood**  
**Nellie Mason**  
**Tessie Mosier**

## 1953

**Nanette Wootton**,  
 Director

## 1954

**Nanette Wootton**,  
 Director

## 1955

**Karleen Rosaaen**,  
 Director  
**Judy Allen** (Bo)  
**Andy**  
**Marilyn Bartlett** (Linda)  
**Cecelia Beuligmann**  
 (Cec)  
**Doris Bradley** (Red)  
**Bunny**  
**Dune**  
**Sharon Feltman** (Gun)  
**Gail Fischer** (Gay)  
**Martha Fitzgerald**  
 (Marty)  
**Karo**  
**Kathy**  
**Caroline Kottman**  
 (Splash)  
**Liz**  
**Carolyn Lockwood**  
 (Timber)  
**Becky Nash** (Benny)  
**Roberta Pile** (Bert)  
**Ruth**  
**Spence**  
**Tritz**  
**Joyce Van Dyke** (Vandy)  
**Jeanne West** (Gabby)  
**Winnie**

## 1956

**Martha Fitzgerald**  
 (Marty) Director

## 1957

**Martha Fitzgerald**  
 (Marty), Director  
**Judy Allen** (Bo)  
**June Bartlett** (Buzz)  
**Judy Bastian** (Jody)  
**Cecelia Beuligmann**  
 (Cec)  
**Doris Bradley** (Red)  
**Gayle Burch** (Skipper)  
**Mrs. Crawford** (Pete)  
**Gail Fischer** (Gay)  
**Martha Fitzgerald**  
 (Marty)  
**Nancy Grant** (Nan)  
**Agnes Hoehn** (Aggie)  
**Sue Johnson** (Sammy)  
**Mrs. King** (Toots)  
**Becky Nash** (Benny)  
**Roberta Pile** (Bert)  
**Sue Post** (Topsy)  
**Barbara Reidaar**  
 (Happy)  
**Muriel Roth** (Melody)  
**Nancy Shaw** (Fish)  
**Nancy Terrell** (Tex)  
**Nancy Weaver** (Beaver)  
**Jeanne West** (Gabby)



# Camp Staff

## 1958

**Helen Anderson**  
(Skeet), Director  
**Judy Allen** (Bo)  
**Judy Bastian** (Jody)  
**Cecelia Beuligmann**  
(Cec)  
**Doris Bradley** (Red)  
**Rita Bradley** (Rusty)  
**Mrs. Betty Case** (Casey)  
**Diane Case**  
**Kathy Case**  
**Gail Fischer** (Gay)  
**Mary Ellen Frank** (Salt)  
**Rose Glover** (Bush)  
**Laura Heldt** (Cookie)  
**Helen Herr** (Priddles)  
**Jan Johnson** (Jay)  
**Emma Kuhlenschmidt**  
(Smilie)  
**Mr. Arthur Mason**  
**Mrs. Arthur Mason**  
**Ida Mary McCutchan**  
(Tiny)  
**Marjorie Melvin** (May)  
**Judy Mills** (Crafty)  
**Alice Morgan** (Dimples)  
**Sue Post** (Topsy)  
**Ester Ralston**  
(Shreddie)  
**Barbara Reidaar**  
(Happy)  
**Donna Richards** (Bugs)  
**Janice Rinnert** (Rinney)  
**Susan Stumpf** (Stumpy)  
**Joan Wright** (Binks)

## 1959

**Helen Anderson**  
(Skeet), Director  
**Edith Addis** (Andy)  
**Judy Bastian** (Jody)  
**Cecelia Beuligmann**  
(Cec)  
**Mary Jo Brazil** (Jo)  
**Jan Brock** (Chip)  
**Bonnie Buttrum** (Beep)  
**Mrs. Betty Case** (Casey)  
**Diane Case**  
**Kathy Case**  
**Gail Fischer** (Gay)  
**Billie Gish** (Flip)  
**Deane Hall** (Woody)  
**Linda Harmon** (Beaver)  
**Nancy Harris** (Rusty)  
**Susan Huck** (Corky)  
**Barbara Jones** (Jonesy)  
**Judy**  
**Mr. Arthur Mason**  
**Mrs. Arthur Mason**  
**Ada Grace McGee**  
(Fibber)  
**Tessie Mosier** (Tessie)  
**Margaret Powell** (Map)  
**Barbara Reidaar**  
(Happy)  
**Donna Riggs** (Kit)  
**Janice Schmidt**  
(Schmidty)  
**Susan Stumpf** (Stumpy)  
**Joan Wright** (Binks)

## 1960

**Helen Anderson**  
(Skeet), Director  
**Patricia Allis** (Randy)  
**Judy Bastain** (Jody)  
**Eva Bell** (Tinker)  
**Carol Berns** (Sparky)  
**Cecelia Beuligmann**  
(Cec)  
**Mrs. Ollie Bland**  
**Bonnie Buttrum** (Beep)  
**Diana Deane** (Dink)  
**Jeane Fine**  
**Maxie Gulliford**  
(Speedy)  
**Saundra Hobbs** (Sonny)  
**Susan Huck** (Corky)  
**Jan Johnson** (Jay)  
**Barbara Jones** (Jonsey)  
**Mr. Art Mason**  
**Mrs. Nellie Mason**  
**Ada Grace McGee**  
(Fibber)  
**Mrs. Tessie Mosier**  
(Tessie)  
**Doretta Otloe** (Ots)  
**Ann K. Parrish** (Misty)  
**Donna K. Riggs** (Kit)  
**Jan Rudolph**  
**Janice Schmidt**  
(Schmidty)  
**Joyce Tavlin** (Tavs)  
**Joyce Torres** (Angie)  
**Sally Wagner** (Wags)  
**Mrs. C.L. Wingerter**  
**Joan Wright** (Binks)

## 1961

**Mrs. Harriet Jones**  
(Jonsey), Director  
**Eva Bell** (Tinker)  
**Vicki Bennett** (Wicki)  
**Nancy Beyers** (Needles)  
**Judy Burton** (Cricket)  
**Mrs. Dorothy Douglas**  
(Doug)  
**Jean A. Erbacher**  
(Shug)  
**Gail Gritzbaugh**  
(Friskie)  
**Mary Lou Hafele** (Lu)  
**Mildred Harris** (Millie)  
**Sandra K. Heidlebaugh**  
(Windy)  
**Nora Jane Kelly** (Kelly)  
**Carolyn Koch** (Kookie)  
**Mrs. Annabelle Long**  
(Johnny)  
**Patty Matthews** (Rusty)  
**Cynthia McIllwain**  
(Mac)  
**Mrs. Tessie Mosier**  
(Tessie)  
**Linda Post** (Scotty)  
**Billie Poston** (Billie)  
**Janet Rhude** (Jerri)  
**Donna K. Riggs** (Kit)  
**Martha Scott** (Mert)  
**Judy Shafer** (Shady)  
**Jean Sites** (Pixie)  
**Shirley Lee Stucky**  
(Sticky)  
**Caroli Sue Watson**  
(Susie)  
**Mary Elizabeth Wilson**  
(Kernel)  
**Judith Wood** (Sunny)  
**Paula Wuckner** (P.J.)

# Camp Staff

## 1962

**Ann Parish** (Misty),  
Director  
**Leota Barnett** (Lee)  
**Eva Bell** (Tinker)  
**Janet Berry** (Razz)  
Mary Margaret  
**Clemens** (Mer)  
**Nancy Dannon** (Nancy)  
**Mary Helen Decker**  
(Pepper)  
**Ruth Durham** (Ruth)  
**Pamela Fitzpatrick**  
(Ricky)  
**Mary Ellen Frank** (Salt)  
Kathleen Ann  
**Gilpatrick** (Jinx)  
**Mary Lou Hafele** (Lu)  
**Lynne Iddings** (Kitty)  
**Pansy Jo Johnson** (Tex)  
**Betty Kloeck** (Tiny)  
**Tessie Mosier** (Tessie)  
**Betty McGregor**  
(Rocky)  
**Liz Lamar** (Dixie)  
**Penny Murphy** (Penny)  
**Anne Marie Nedeff**  
(Gypsy)  
Mary Kathryn  
**O'Connor** (Oakie)  
**Linda Post** (Scotty)  
**Janet Pounds** (Punky)  
**Linda Prather** (Winkie)  
**Betsy Reid** (Kentuck)  
**Vada Swertfeger**  
(Vada)  
**Jane Westenberger**  
(Randy)  
**Susan Wheaton** (Pixie)  
**Mary Elizabeth Wilson**  
(Kernal)

## 1963

**Ann Parrish** (Misty),  
Director  
**Cathy Allison** (Taf)  
**Beverly Backstrom**  
(Bev)  
**Janet Berry** (Razz)  
**Beth Courtright** (Tish)  
**Ruth Durham** (Ruth)  
**Sarah Flach** (Flash)  
**Kathleen Gilpatrick**  
(Jinx)  
**Mary Lou Hafele** (Lu)  
**Barbara Hartlein**  
(Bobbie)  
**Elizabeth Lamar** (Dixie)  
**Helen Lamar** (Kim)  
**Patricia Matthews**  
(Rusty)  
**Jean McCullough** (Zip)  
**Bonnie Meacham** (Scout)  
**Tessie Mosier** (Tessie)  
**Linda Post** (Scotty)  
**Donna Riggs** (Kit)  
**Janice Schmidt**  
(Schmidty)  
**Jo Ann Siemors** (Jo Jo)  
**Betty Sites** (Liz)  
**Joan Sites** (Pixie)  
**Yvonne Stinson** (Tex)  
**Susan Stumpf** (Stumpy)  
**Vada Swertfeger** (Vada)  
**Patricia Tressell** (Buzz)  
**Ginger Trundle** (Ginger)  
**Becky Wagner** (Keeto)  
**Paula Wallace** (Pepper)  
**Jane Westenberger**  
(Randy)  
**Judith Lynn Will** (Willie)  
**Libby Wilson** (Kernel)

## 1964

**Helen Anderson**  
(Skeet), Director  
**Josette Adams** (Jo)  
**Judy Bastian** (Jody)  
**Ann Briel** (Abe)  
**Ruth Durham** (Ruth)  
**Linda Fields**  
**Mary Lou Hafele** (Lu)  
**Elizabeth Hein**  
**Carole Marcia Hughs**  
**Jan Johnson** (Jay)  
**Linda Johnson** (Shan)  
**Barbara Jones** (Jonsey)  
**Deedra Lucas**  
**Patricia Lukens**  
**Art and Nellie Mason**  
**Susan Meyers** (Tracy)  
**Patricia Mitchell**  
**Tessie Mosier** (Tessie)  
**Patricia Park**  
**Sandy Park**  
**Linda Post** (Scotty)  
**Karen Riggs** (Dusty)  
**Lisa Ritz**  
**Jenny Stevens**  
**Iris Stewart** (Dodd)  
**Yvonne Stinson** (Tex)  
**Susan Stumpf** (Stumpy)  
**Anne Smead** (Smeady)  
**Vada Swertfeger** (Vada)  
**Joyce Tavlin** (Tavs)  
**Patricia Tressell** (Buzz)  
**Becky Wagner** (Keeto)  
**Sally Wagner** (Wags)  
**Sara Wilson**  
**Janie Wulff** (Honi)

## 1965

**Mary Lu Hafele** (Lu),  
Director  
**June Baskett** (Breeze)  
**Ann Elaine Briel** (Abe)  
**Nancy Burns** (Jo)  
**Bobbi Crane** (Sparkle)  
**Sharron Duncan** (Dunki)  
**Diane Dunigan**  
**Ruth Durham** (Ruth)  
**Betty Ell** (Bill)  
**Marilyn Falls** (Mar)  
**Susan Flanigan**  
(Cricket)  
**Kathy Gilpatrick** (Jinx)  
**Barbara Graman**  
(Packy)  
**Gail Gritzbaugh**  
(Friskie)  
**Diane Hartig** (Rusty)  
**Agnes Hoehn** (Aggie)  
**Juanita Kelley** (Kelley)  
**Art and Nellie Mason**  
**Janie McConnell** (Mac)  
**Carolyn Moll** (Mouse)  
**Tessie Mosier** (Tessie)  
**Nancy Offerman**  
(Sporty)  
**Judy Reisinger** (Nickie)  
**Karen Gayle Riggs**  
(Dusty)  
**Joyce Romer** (Romes)  
**Rickie Schmadel** (Rickie)  
**Jayne Seiffer** (T.J.)  
**Pat Shook** (Shookie)  
**Anne Louise Smead**  
(Smeady)  
**Iris Stewart** (Dodd)  
**Anne Vogel** (Splash)  
**Becky Wagner** (Keeto)  
**Janet Louise Wulff**  
(Honi)

# Camp Staff

## 1966

**Mary Lou Hafele** (Lu),  
Director  
**Susan Baumgart**  
(Toddy)  
**Deedra Benthall** (Dee)  
**Karen Bohleber** (Bow)  
**Ann Briel** (Abe-baby)  
**Judy Burns** (Jabber)  
**Megan Coke** (Megan)  
**Ruth Durham** (Ruth)  
**Mary Lloyd Engelbrecht**  
(Loy)  
**Doloros Flittner** (Flitt)  
**Kay Garrett** (Kagie)  
**Marlene Hanni** (Amie)  
**Patty Hurd** (Tic)  
**Jan Johnson** (Jay)  
**Linda Johnson** (Shan)  
**Karen Kerr** (Trike)  
**Linda Kerr** (Joker)  
**Susanne Knust** (Susie)  
**Art and Nellie Mason**  
**Susan Meyers** (Tracy)  
**Cecilia Newton** (Cece)  
**Judy Reisinger** (Nickie)  
**Karen Riggs** (Dusty)  
**Beverly Jean Seavers**  
(Shell)  
**Anne Statham** (Tate)  
**Elaine Stewart** (Speedy)  
**Linda Stewart** (Skipper)  
**Patricia Stippler**  
(Beeper)  
**Jeanie Wagner** (Major)  
**Teckla Wells** (Tec)  
**Margaret Wilson** (Jurm)  
**Sandy Worthington**  
(Sanje)  
**Janie Wulff** (Honi)

## 1967

**Mary Lou Hafele** (Lu),  
Director  
**Karen Bohleber** (Bow)  
**Sheila Bolduc** (Duke)  
**Judith Ann Burns**  
(Jabber)  
**Ruth Durham** (Ruth)  
**Patsy Ellis** (Tennessee)  
**Mary Lloyd Engelbrecht**  
(Loy)  
**Betty Fisher** (B.J.)  
**Lori Flittner** (Flitt)  
**Carol Franz** (Will)  
**Judith Howard** (Louie)  
**Betty James** (Kochie)  
**Linda Johnson** (Shan)  
**Pat Johnson** (Patches)  
**Mazine Fae Knudsen**  
(Sky)  
**Susanne Knust** (Susie)  
**Art and Nellie Mason**  
**Patty Moll** (Kwak)  
**Nancy Montgomery**  
(Monty)  
**Cecelia Newton** (CeCe)  
**Jackie Nichols** (Niki)  
**Marja-Leena Paatonen**  
(Maala)  
**Karen Gayle Riggs**  
(Dusty)  
**Lonna Rothert** (Elfie)  
**Elain Schulteis** (Lainey)  
**Anne Smead** (Smeady)  
**Anthea Songer** (Andy)  
**Kathy Sotolongo**  
(Sunny)  
**Anne Statham** (Tate)  
**Jeannie Wagner** (Major)  
**Kathy Wilson** (Whoo)  
**Sandy Worthington**  
(Sanje)

## 1968

**Barbara Jones** (Jonsey),  
Director  
**Mary Kay Bottomley**  
(Root)  
**Clarene Brewer** (Speedy)  
**Kay Chambers** (Yak)  
**Becky Crabtree** (Carrie)  
**Ruth Durham** (Nibbles)  
**Ellen Eicher** (Bugsy)  
**Carol Franz** (Will)  
**Jean Gardener** (Snitch)  
**Chris Graves** (Pepper)  
**Bobbi Gruel** (Paddles)  
**Pat Johnson** (Patches)  
**Susie Knust** (Tasty)  
**Mary Lou Lively** (Deadly)  
**Cassie Major** (Moto)  
**Rose Maneke** (Flash)  
**Art and Nellie Mason**  
**Patty Moll** (Kwak)  
**Jackie Nichols** (Niki)  
**Sherrie Renneau** (Shay)  
**Linda Rostberg** (Rose)  
**Mary Lee Schweikert**  
(Wendy)  
**Marg Thompson**  
(Tommie)  
**Peggy Walk** (Salt)  
**Sandy Worthington**  
(Sanje)  
**Brenda Zeh** (Pip)

## 1969

**Barbara Jones** (Jonsey),  
Director  
**Alice Barthold** (Reb)  
**Kay Chambers** (Yak)  
**Kathryn Duppert** (Dup)  
**Ruth Durham**  
(Ruth - Nibbles)  
**Patricia Ellis** (Tennessee)  
**Melinda Fischer** (Fish)  
**Carol Franz** (Will)  
**Jean Gardener** (Snitch)  
**Judy Gilbert** (Hooty)  
**Margret Ellen Glackman**  
(Pixie)  
**Louise Hedge** (Wedge)  
**Lynda Holm** (House)  
**Martha Knust** (Grabs)  
**Susie Knust** (Tasty)  
**Angela Kolle** (Zip)  
**Cassie Major** (Moto)  
**Art and Nellie Mason**  
**Jan Johnson May** (Jay)  
**Nancy Mickleton** (Mik)  
**Patricia Moll** (Kwak)  
**Betsy Mosher** (Bo)  
**Angela Mulzer** (Pax)  
**Jacquelyn Nichols** (Niki)  
**Deborah Poole** (Dede)  
**Linda Rostberg** (Rose)  
**Mary Lee Schweikert**  
(Windy)  
**Judith Scott** (Scotty)  
**Beth Ann Sweeney**  
(Tweet)  
**Anne Vogel** (Splash)  
**Cynthia Winkler** (Wink)  
**Sandra Worthington**  
(Sanje)  
**Brenda Zeh** (Pip)

# Camp Staff

## 1970

**Barbara Jones** (Jonsey),  
Director  
**Alice Barthold** (Reb)  
**Sister Josepha Book**  
(Sister)  
**Delores Chambers** (Yak)  
**Janet Chambers** (Pans)  
**Louise Hedge Claybaugh**  
(Wedge)  
**Sue Deimer** (Tigger)  
**Diane Dimon** (Karat)  
**Kathryn Duppert** (Dup)  
**Marilyn Feldman** (Dusty)  
**Carol Franz** (Will)  
**Mary Jean Gardner**  
(Snitch)  
**Judith Gilbert** (Hooty)  
**Catherine Grachek**  
(Checkers)  
**Mary Lou Hafele** (Lu)  
**Susan Hanson** (Pokey)  
**Sister Mary Emma**  
**Jochum** (Lulu)  
**Susie Knust** (Tasty)  
**Art and Nellie Mason**  
**Jan Johnson May** (Jay)  
**Nancy Mikleton** (Mik)  
**Angela Mulzer** (Pax)  
**Jacquelyn Nichols** (Niki)  
**Fran Reitz** (Putt Putt)  
**Fran Rostberg** (Rosc)  
**Mary Lee Schweikert**  
(Windy)  
**Sister Mary Agnes**  
**Sermersheim**  
(Sermey)  
**Laura Smart** (Chip)  
**Candace Stapleton**  
(Mumbles)  
**Karen Statham** (Bunny)  
**Connie Zuber** (Zube)

## 1971

**Barbara Jones** (Jonsey),  
Director  
**Diane Alvey** (Bones)  
**Sister Josepha Book**  
(Sister)  
**Dee Dimon** (Karat)  
**Marilyn Feldmann**  
(Dusty)  
**Mary Lou Hafele** (Lu)  
**Sue Hansen** (Pokey)  
**Sister Geraldine**  
**Hedinger** (Murch)  
**Barb Joos** (Juice)  
**Sister Mary Jude** (Judy)  
**Suzette Julian** (Zus)  
**Martha Knust** (Grabs)  
**Susie Knust** (Tastie)  
**Sister M. Dolorita Libs**  
(Sister Dolie)  
**Jean Loudon** (Tyge)  
**Art and Nellie Mason**  
**Jan May** (Jay)  
**Nancy Mikleton** (Mik)  
**Angela Mulzer** (Pax)  
**Nancy Neale** (Duckie)  
**Jackie Nichols** (Niki)  
**Janis Oing** (Culley)  
**Gina Robinson** (Cher)  
**Lisa Shurtz** (Lupe)  
**Candy Stapleton**  
(Mumbles)  
**Karen Statham** (Bunny)  
**Mary Stippler** (Jake)  
**Lois Strayer** (Wheels)  
**Barbara Zimmer**  
(Mushie)  
**Connie Zuber** (Zube)

## 1972

**Barbara Jones** (Jonsey),  
Director  
**Diane Alvey** (Bones)  
**Linda Alvey** (Elephant)  
**Cheryl Bertke** (Bird)  
**Sister Josepha Book**  
(Sister)  
**Dee Dimon** (Karat)  
**Marilyn Feldman**  
(Dusty)  
**Sister Mary Benet**  
**Goodrum**  
(Sister Bennie)  
**Cathy Grachek**  
(Checkers)  
**Flora Harris** (Flossy)  
**Christy Hedinger** (Dew)  
**Sister Geraldine**  
**Hedinger** (Murch)  
**Kris Hoff** (Pickles)  
**Sister Mary Inez**  
(Sister Enie)  
**Chris Jackson** (Frog)  
**Suzette Julian** (Zus)  
**Barb Kays** (Ebby)  
**Nancy Kifer** (Granny)  
**Sister M. Dolorita Libs**  
(Sister Dollie)  
**Jeanie Loudon** (Tyge)  
**Stephanie Lykins**  
(Brady)  
**Cassie Major** (Moto)  
**Art and Nellie Mason**  
**Jan Johnson May** (Jay)  
**Angie Mulzer** (Pax)  
**Nancy Neale** (Duckie)  
**Carol Schuh** (Foot)  
**Lisa Shurtz** (Lupe)  
**Barbara Sisson** (Gofer)  
**Candy Stapleton**  
(Mumbles)  
**Terry Stephens**  
(Squeaky)  
**Lois Strayer** (Wheels)  
**Jan Watson** (Sleepy)  
**Janet White** (Blondie)  
**Susan Winkler** (Corky)  
**Vicki Yunker** (Lollipop)  
**Barb Zimmer** (Mushie)  
**Connie Zuber** (Zube)

## 1973

**Barbara Jones** (Jonsey),  
Director  
**Marguerite Barto** (Zoom)  
**Cheryl Bertke** (Bird)  
**Sister Josepha Book**  
(Sister)  
**Arlene Bresner** (Ralf)  
**Marian Deubel** (Dubey)  
**Diane Dimon** (Karat)  
**Marilyn Feldman**  
(Dusty)  
**Cindy Gullett** (Cookie)  
**Cheryl Gullett** (Wicker)  
**Linda Harris** (Rafty)  
**Christine Hedinger**  
(Dew)  
**Pam Hendricks** (Nails)  
**Christa Jackson** (Frog)  
**Connie Kern** (Popcorn)  
**Nancy Kifer** (Granny)  
**Art and Nellie Mason**  
**Jan Johnson May** (Jay)  
**Catherine McDonald**  
(Mickey)  
**Megan McKenna**  
(Mandy)  
**Angela Mulzer** (Pax)  
**Bonnie Reidenbach**  
(Coco)  
**Debra Sander** (Sandy)  
**Bonnie Schuler** (Shoe)  
**Karen Shurtz** (Dutch)  
**Candy Stapleton**  
(Mumbles)  
**Lois Strayer** (Wheels)  
**Sally Wagner** (Wags)  
**Lois Warren** (Cam)  
**Vicki Yunker** (Lollipop)  
**Barbara Zimmer**  
(Mushie)  
**Connie Zuber** (Zube)

# Camp Staff

## 1974

**Barbara Jones** (Jonsey),  
Director  
**Peg Barto** (Zoom)  
**Boyd Bosaw &**  
Family  
**Sister Josepha Book**  
(Sister)  
**Connie Bryant** (Turtle)  
**Sue Couri** (Molly)  
**Marian Deubel** (Duby)  
**Kay Evans** (Brownie)  
**Marilyn Feldman** (Dusty)  
**Kate Glackman** (Bama)  
**Cindy Gullett** (Cookie)  
**Cheryl Gullet** (Wicker)  
**Claudia Hubbell**  
(Brandy)  
**Nancy Kifer** (Granny)  
**Susie Knust** (Tasty)  
**Art Mason**  
**Nellie Mason**  
**Nancy Massagla** (Flash)  
**Jan Johnson May** (Jay)  
**Margaret McDonald**  
(Mickey)  
**Maggie McRae** (Scottie)  
**Jean Mulzer** (Splash)  
**Debbie Randall** (Cricket)  
**Anita Saucer** (Cup)  
**Caryn Schreiber**  
(Skipper)  
**Bonnie Schuler** (Shoe)  
**Debbie Swoik** (Peppy)  
**Ellen Vogel** (Chirp)  
**Sally Wagner** (Wags)  
**Vicki Yunker** (Lollipop)  
**Barb Zimmer** (Mushie)  
**Connie Zuber** (Zube)

## 1975

**Jan Johnson May** (Jay),  
Director  
**Gwen Ballis** (Gig)  
**Sister Josepha Book**  
(Sister)  
**Janet Browning**  
(Blondie)  
**Marla Claypool** (Clay)  
**April Dorsey** (A-JE)  
**Jim Efinger** (Mr. Jim)  
**Joyce Efinger** (Joyce)  
**Kim Elmendorf**  
(Tadpole)  
**Marilyn Feldman**  
(Dusty)  
**Katie Glackman** (Bama)  
**Deborah Johnson** (Buck)  
**Pam Johnson** (P.J.)  
**Nancy Kifer** (Granny)  
**Susie Knust** (Tastey)  
**Amy Loiselle** (Keel)  
**Mari Loehrlein** (Tigger)  
**Peg McDonell** (Paddles)  
**Jolene Mills** (Buggie)  
**Leila Owen** (Scooter)  
**Pam Prince** (Kit)  
**Sheryl Scheller** (Corky)  
**Caryn Schreiber**  
(Skipper)  
**Bonnie Schuler** (Shoe)  
**Anita Saucer** (Cup)  
**Paula Schmidt** (Flip)  
**Patty Schneider** (Salt)  
**Ellen Vogel** (Chirp)  
**Jenny Wilhite** (Willie)  
**Vicki Yunker** (Lollipop)  
**Barbara Zimmer**  
(Mushie)  
**Connie Zuber** (Zube)

## 1976

**Sara Yinst** (Say),  
Director  
**Lana Beckner**  
(Lamb Chop)  
**Sister Josepha Book**  
(Sister)  
**Rachel Buckwinkel**  
(Bump)  
**Patty Cameron**  
(McKeaver)  
**Beverly Dorris** (Flush)  
**Jane Efinger** (Spicy)  
**Jim Efinger** (Mr. Jim)  
**Joyce Efinger** (Joyce)  
**Andrea Ellis** (Kisha)  
**Chris Getz** (Patience)  
**Laurie Glackman** (Alex)  
**Lynn Heugel** (Rabbit)  
**Marian Johnson** (Leafy)  
**Susie Knust** (Tasty)  
**Jean Loudon** (Tyge)  
**Nancy McElmurry** (Mac)  
**Gayle McGinnis** (Puff)  
**Linda Merker** (Merk)  
**Kim Nash** (Jaws)  
**Debbie Olberding**  
(Dinger)  
**Ann Poole** (Bibs)  
**Paula Schmidt** (Flip)  
**Patty Schneider** (Salty)  
**Bonnie Schuler** (Shoe)  
**Shelly Watanabe** (Lader)  
**Joanne Worley** (Lucky)  
**Pat Zinobie** (Zap)

## 1977

**Marilee Keller**  
(Marilee), Director  
**Michele Arnold** (Suds)  
**Cheryl Bertke** (Bird)  
**Sister Josepha Book**  
(Sister)  
**Dede Collier** (Sunny)  
**Nancy Davidson** (Jay)  
**Jim Efinger** (Mr. Jim)  
**Joyce Efinger** (Joyce)  
**Andi Ellis** (Kisha)  
**Katie Glackman** (Levi)  
**Susie Greene** (Caggie)  
**Esther Haenni** (Esther)  
**Pat Keller** (Captain K)  
**Beth Lively** (Skipper)  
**Jeanie Loudon** (Jeanie)  
**Cassandra Major**  
(Cassie)  
**M. Gayle McGinnis**  
(Puff)  
**Linda Mercker** (Merk)  
**Natalie Miller** (Gnat)  
**Debbie Oberding**  
(Dinger)  
**Margaret Patton** (Gusto)  
**Karla Rohdy** (P.B.)  
**Bonnie Schuler** (Shoe)  
**Rose Steele** (Flour)  
**Sue Steele** (Kochie)  
**Susan Walker** (Noni)  
**Shelly Watanabe**  
(Lader)  
**Barbara Welsh** (Harvey)  
**Barb Zimmer** (Mushie)

# Camp Staff

## 1978

**Cassandra Major**  
(Cassie), Director  
**Cheryl Bertke** (Bird)  
**Sister Josepha Book**  
(Sister)  
**Karen Browning** (Slush)  
**Lori Crandall** (Winks)  
**Jim Efinger** (Mr. Jim)  
**Joyce Efinger** (Joyce)  
**Amy Gottman** (Coa)  
**Sheri Harris** (Cap'n)  
**Jenny Howard** (Turtle)  
**Cheryl Jackson** (Hotdog)  
**Susie Knust** (Tasty)  
**Janet Kronwall** (Tosa)  
**Jeanie Loudon** (Jeanie)  
**Sue Majewski** (Skeeter)  
**Laura McDonald** (Mo)  
**Gayle McGinnis** (Puff)  
**Mary Michelson** (Windy)  
**Paula Miller** (Flip)  
**Margaret Patton** (Gusto)  
**Holly Ritchie** (John Sue)  
**Karen Rooney**  
(Crackers)  
**Jennifer Sietz** (Soup)  
**Susan Walker** (Noni)  
**Shelly Watanabe** (Lader)  
**Gayle Younger**  
(Hurricane)

## 1979

**Cassandra Major**  
(Cassie), Director  
**Linda Bellamy** (Sunny)  
**Cheryl Bertke** (Bird)  
**Karen Bertke** (Sparrow)  
**Sister Josepha Book**  
(Sister)  
**Karen Browning** (Slush)  
**Liz Constant** (Comet)  
**Barbara Efinger**  
**Jim Efinger** (Mr. Jim)  
**Joyce Efinger** (Joyce)  
**Maureen Flanagan**  
(Firefly)  
**Jane Garnett** (Knife)  
**Chris Getz** (Peng)  
**Charlotte Goffinet**  
(Charlotte)  
**Amy Gottman** (Coa)  
**Jenny Howard** (Turtle)  
**Ann Julian** (Gnu)  
**Rhonda Keller** (Spoon)  
**Linda Krutsinger** (Pooh)  
**Annette Lautner** (Sam)  
**Laura McDonald** (Mo)  
**Gayle McGinnis** (Gayle)  
**Karmen Myers** (Oscar)  
**Anne O'Conner** (Oakie)  
**Meg Patton** (Gusto)  
**Nancee Perrine** (Sparky)  
**Karen Rooney**  
(Crackers)  
**Kathy Smith** (K.J.)  
**Carmen Talbott** (Kermit)  
**Gayle Washburn**  
(Minnow)

## 1980

**Cassandra Major**  
(Cassie), Director  
**Deanna Baker**  
(Sundance)  
**Eleisa Beckort** (Ebie)  
**Karen Bertke** (Sparrow)  
**Yvonne Bertke** (Rowlf)  
**Sister Josepha Book**  
(Sister)  
**Jayna Bowling** (Sparky)  
**Kim Broaddus**  
(Hershey)  
**Kathy Cotton** (Tater)  
**Lori Edmonson** (Cricket)  
**Jim Efinger** (Mr. Jim)  
**Joyce Efinger** (Joyce)  
**Jolee Greubel** (Thumper)  
**Jenny Howard** (Turtle)  
**Laura Keller** (T. R.)  
**Rhonda Keller** (Bubbles)  
**Suzanne Lamey**  
(Cypress)  
**Karen Lautner** (Twiggy)  
**Jean Loudon** (Jeanie)  
**Laura McDonald** (Mo)  
**Janet Miller** (Orchid)  
**Laura Miller** (TR)  
**Jeanne Monday**  
(Groover)  
**Suzanne Newland**  
(Suzela)  
**Becky Orander** (Andy)  
**Mary Lou Owen** (Rockie)  
**Margaret Patton** (Gusto)  
**Karen Rooney**  
(Crackers)  
**Kim Scheible** (Summer)  
**Sara Schneider** (Specs)  
**Jenny Seitz** (Russet)  
**Laura Sheehan** (Hobie)  
**Anne Wolfe** (Rainbow)  
**Leslie Wood** (Woody)

## 1981

**Marianne Bradford**  
(Skeeter), Director  
**Mary Adams** (Petunia)  
**Eleisa Beckort** (Ebie)  
**Karen Bertke** (Sparrow)  
**Sister Josepha Book**  
(Sister)  
**Anna Marie Brenner**  
(Jaws)  
**Sharon Brinksnaeder**  
(Brinky)  
**Shayne Cherry** (Strider)  
**Lauralyn Cicchella**  
(Feather)  
**Lori Lynn Edmonson**  
(Cricket)  
**Jim Efinger** (Mr. Jim)  
**Joyce Efinger** (Joyce)  
**Ann-Jeanette Fowler**  
(Moonbeam)  
**Kim Gass** (Blondie)  
**Shiela Gould** (Sunshine)  
**Cassandra Grayson**  
(Mercedes)  
**Melissa Jarboe**  
(Chipmunk)  
**Rhonda Keller** (Bubbles)  
**Karen Krietenstein**  
(Bones)  
**Sang Susan Lee**  
(Chipper)  
**Mary Beth Logue** (Star)  
**Paula Miller** (Micky)  
**Tina Louise Miller**  
(Guey)  
**Rhonda Naegele**  
(Twiggy)  
**Mary Lou Owen** (Rockie)  
**Margaret Patton** (Gusto)  
**Georgia Poehlein**  
(Yahztee)  
**Jackie Price** (Chipmunk)  
**Donna K. Riggs**  
(Kit T. Katt)  
**Jenny Seitz** (Russet)  
**Robin Thrush** (Bobin)  
**Ann Vollmer** (Arnie)  
**Sara Jo Wilson** (Giggy)  
**Sarah Wilson** (Squirrel)

# Camp Staff

## 1982

**Marianne Bradford** (Skeeter), Director  
**Leslie Antkowiak** (Sunny)  
**Eleisa Beckort** (Ebie)  
**Karen Bertke** (Sparrow)  
**Sister Josepha Book** (Sister)  
**Anna Marie Brenner** (Jaws)  
**Felicia Gay Bush** (Fish)  
**Patricia Cox** (Sprout)  
**Jim Efinger** (Mr. Jim)  
**Joyce Efinger** (Joyce)  
**Kris Fleming** (Chuckles)  
**Kimberly Howerton** (BooBoo)  
**Melissa Jarboe** (Chipmunk)  
**Arilla Jane Johnson** (Gopher)  
**Christine Jones** (Riss)  
**Elaine McPherson** (Ehav)  
**Mary Lou Owen** (Rockie)  
**Georgia Pohlein** (Yahztee)  
**Jody Powell** (Fozzie)  
**Linda Reed** (Cookie)  
**Karen Sue Rothkopf** (Phoenix)  
**Jo Ann Seib** (Idaho)  
**Margaret Seib** (Spud)  
**Jenny Seitz** (Russet)  
**Priscilla Simpson**  
**Sandy Stoen** (Stitch)  
**Robin Sweet** (Red)  
**Ann Vollmer** (Arnie)  
**Kim Vollmer** (J.D.)  
**Sara Jo Wilson** (Giggy)  
**Patty Winchell** (Paws)  
**Sarah Wilson** (Squirrel)

## 1983

**Marianne Bradford** (Skeeter), Director  
**Sister Josepha Book** (Sister)  
**Tricia Coleman** (Buddy)  
**Patricia Cox** (Sprout)  
**Jim Efinger** (Mr. Jim)  
**Joyce Efinger** (Joyce)  
**Joyce Flamion** (Mashed)  
**Julie Gee** (JuJu)  
**Laura Gillen** (Lalee)  
**Tracy Gillen** (Bamba Jo)  
**Cris Jones** (Riss)  
**Candie Kendall** (Candie)  
**Terri Lautner** (Mutton)  
**Sue Majewski** (Ski)  
**Elaine McPherson** (Ehav)  
**April Owen** (Prilly)  
**Mary Lou Owen** (Rockie)  
**Jacqueline Price** (Chipmunk)  
**Linda Reed** (Cookie)  
**Kathy Reynolds** (Tigger)  
**Manette Rudolph** (Cake)  
**Jane Sauceco** (Sauce)  
**Jo Ann Seib** (Idaho)  
**Jenny Seitz** (Russet)  
**Jim Stoen** (Bear)  
**Sandy Stoen** (Stitch)  
**Robin Sweet** (Red)  
**Ann Vollmer** (Arnie)  
**Sara Jo Wilson** (Giggy)  
**Sarah Wilson** (Squirrel)

## 1984

**Sue Sullivan** (Sully), Director  
**Jennifer Alverson** (Bunifer)  
**Sister Josepha Book** (Sister)  
**Tracy Casey** (Ko)  
**Julie Crowe** (Pt)  
**Donna DePrez** (Peaches)  
**Helen Dooley** (Yolo)  
**Jim Efinger** (Mr. Jim)  
**Joyce Efinger** (Joyce)  
**Tammy Hall** (Broccoli)  
**Kathy Hoffman** (Zephyr)  
**Charlotte Hubert** (Carrot)  
**Tina Jarboe** (Ti)  
**Laura Jensen** (Curry)  
**Nancy Johnson** (Pepper)  
**Karya Juedes** (Dew)  
**Mary Kirsch** (Hershey)  
**Marge McCarron** (Zin)  
**Elaine McPherson** (Ehav)  
**Diana Miller** (Nook)  
**Barb Nicklas** (Bub)  
**April Owen** (Prilly)  
**Lori Peter** (Zucchini)  
**Georgia Poehlein** (Yahztee)  
**Teri Rawlings** (Thumper)  
**Jim Stoen** (Bear)  
**Sandy Stoen** (Stitch)  
**Sondra Wadley** (Toto)  
**Sarah Wilson** (Squirrel)

## 1985

**Mary Jo Zachow** (Sparks), Director  
**Karin Anderberg** (Swede)  
**Lana Bedwell** (Peeper)  
**Nicky Bhamra** (Skein)  
**Sister Josepha Book** (Sister)  
**Laura Born** (Deli)  
**Nicky Brett** (Peanuts)  
**Lorraine Cannistraro** (Rainy)  
**Janice Daniel** (Cedar)  
**Valerie DeBolt** (Poet)  
**Jim Efinger** (Mr. Jim)  
**Joyce Efinger** (Joyce)  
**Bonnie Fisher** (Buttons)  
**Lori Guy** (Frog)  
**Tammy Hayes** (Squirrel)  
**Dawn Krygielka** (Mickey)  
**Beverly Little** (Curly)  
**Brenda Little** (Snooks)  
**Anita Loehrlein** (Ant)  
**Diana Miller** (Nook)  
**Barbara Murray** (Bubba)  
**Jennifer Ozanic** (Zank)  
**Terri Rawlings**  
**Mendy Reed** (Splash)  
**Leonna Rueger** (Onna)  
**Jenny Seitz** (Russet)  
**Shannon Siefker**  
**Melanie Solik** (Melanie)  
**Terri Thomas** (Comet)  
**Tina Voges** (Kirby)

# Camp Staff

## 1986

**Sandy Stoen** (Stitch),  
Director  
**Pam Anderson** (Skeeter)  
**Ann Bagley** (S.A.I.)  
**Sister Josepha Book**  
(Sister)  
**Mary Beth Daum** (Z)  
**Helen Dooley** (Yolo)  
**Jim Efinger** (Mr. Jim)  
**Joyce Efinger** (Joyce)  
**Joan Evrard** (Straker)  
**Bonnie Fischer**  
(Buttons)  
**Vicki Freeman** (Treble)  
**Lisa Harpenau** (Harp)  
**Beth Heil** (Alvin)  
**Susan Hoppe** (Peaches)  
**Melissa Jarboe**  
(Chipmunk)  
**Lisa Jasper** (Firefly)  
**Roseann Kelly** (Freud)  
**Linda Merker** (Merk)  
**Sue Miles** (Snuz)  
**April Owen** (Prilly)  
**Alisha Pryor** (Dr. Sox)  
**Terri Rawlings**  
(Thumper)  
**Jan Sarver** (Jazz)  
**Shawn Siefker** (Flipper)  
**Sara Sprinkle** (Splash)  
**Loretta Stewart**  
(Slush Puppy)  
**Jim Stoen** (Bear)  
**Martha Thiery** (Cricket)  
**Amy Vancleave** (Oreo)  
**Carla Vaughn** (Beamer)  
**Wendy Williams** (Spiel)  
**Sarah Wilson** (Squirrel)  
**Melissa Wolf** (Chip)

## 1987

**Beth Heil** (Alvin),  
Director  
**Jean Batie** (Cookie)  
**Sister Josepha Book**  
(Sister)  
**Kelly Brown** (Elmo)  
**Linda Christman** (Ernie)  
**Erica Deters**  
(Moonbeam)  
**Jim Efinger** (Mr. Jim)  
**Joyce Efinger** (Joyce)  
**Lori Ennis** (Pooky)  
**Bonnie Fischer** (Buttons)  
**Tammy Given**  
(Sunshine)  
**Heath Goebel** (Goose)  
**Tammy Hayes** (Squirrel)  
**Dawn Hillenbrand** (Zip)  
**Rebecca Jackson**  
(Maverick)  
**Beth Mayer** (Topper)  
**Sue Miles** (Snuz)  
**Beth Millet** (Amber)  
**Deborah Moseley**  
(Scooter)  
**Nancee Perrine** (Sparky)  
**Georgia Poehlein**  
(Yahztee)  
**Alicia Pryor** (Dr. Sox)  
**Mary Grace Ramsey**  
(Gracie)  
**Theresa Rawlings**  
(Thumper)  
**Leslie Rueger** (Spuds)  
**Sara Sprinkle** (Splash)  
**Jody Stewart** (Mouth)  
**Martha Thiery** (Cricket)  
**Jamie Voges** (Kimo)  
**Melissa Wolf** (Chip)

## 1988

**Beth Heil** (Alvin),  
Director  
**Jean Batie** (Cookie)  
**Kelly Brown** (Elmo)  
**Tammy Brown** (Rocky)  
**Shauna Cavins** (Minnie)  
**Kathy Cotton** (Tater)  
**Beatrice Davis** (Goofy)  
**Jim Efinger** (Mr. Jim)  
**Joyce Efinger** (Joyce)  
**Amy Eppler** (Tomasina)  
**Bonnie Fischer** (Buttons)  
**Lisa Fitts** (Floss)  
**Tina Fleener** (Chip)  
**Ellen Gallmeister** (Odie)  
**Angela Hay** (JD)  
**Jane Hoch** (Tree)  
**Lisa Langebrake**  
(Red Fox)  
**Kathy McPherson**  
(Hobbit)  
**Michelle Mills** (M & M)  
**Georgia Poehlein**  
(Yahtzee)  
**Shannon Putman**  
(Lucky)  
**Leslie Rueger** (Spuds)  
**Beth Steverson**  
(Mischief)  
**Marti Thiery** (Cricket)  
**Brandy Tyler** (Goose)  
**Dana Vaughn** (Pluto)

## 1989

**Beth Heil** (Alvin),  
Director  
**Anne Adolfsen** (Bum)  
**Patrick Carlson** (Porky)  
**Linda Christman** (Ernie)  
**Brenda Durcholz**  
(Snicker)  
**Jim Efinger** (Mr. Jim)  
**Joyce Efinger** (Joyce)  
**Lori Ennis** (Pooky)  
**Angela Pedro Fulk**  
(Gypsy)  
**Mindy Herzog** (Pooh)  
**Cindy Hoppe** (Laz)  
**Judy Keown**  
(Sweet Pickle)  
**Jennifer Knight** (JJ)  
**Darlene McReynolds**  
(Shortround)  
**Amber Moody** (Elmer)  
**Bernita Muller** (Bennie)  
**Ange Pautler** (Bear)  
**Doris Peter** (Dink)  
**Rachel Polk** (Pokey)  
**Autumn Reyes** (Cleo)  
**Sara Sprinkle** (Splash)  
**Cecilia Thiery** (Dilly)  
**Marti Thiery** (Cricket)  
**Roxanne Wessel**  
(Roxstar)  
**Mary Willis** (Phi)



# Camp Staff

## 1990

**Beth Heil** (Alvin),  
Director  
**Anne Adolfson** (Bum)  
**Tina Barr** (Kirby)  
**Kelly Brown** (Elmo)  
**Laura Clements** (Tootie)  
**Jim Efinger** (Mr. Jim)  
**Joyce Efinger** (Joyce)  
**Lisa Helmerich**  
(Patches)  
**Marnie Johnson**  
(Cricket)  
**Judi Keown**  
(Sweet Pickle)  
**Jennifer Knight** (JJ)  
**Julie Market** (Jammer)  
**Amber Moody** (Elmer)  
**Aimee Moran** (Goofy)  
**Holly Rummel** (Riff Raff)  
**Tiffany Taylor** (Casper)  
**Richard Terry** (RayJK)  
**Cecilia Thiery** (Dilly)  
**Amy VanBuren**  
(Pebbles)  
**Mary Willis** (Phi)  
**Melissa Wolf** (Chip)

## 1991

**Beth Heil** (Alvin),  
Director  
**Anne Adolfson** (Bum)  
**Kelly Brown** (Elmo)  
**Patrick Carlson** (Porky)  
**Fiona Chamy** (Teddy)  
**Jennifer Clements** (Pooh)  
**Nancy Cockrum** (Nancy)  
**Christy Day** (Tigger)  
**Tara Derr** (J.B.)  
**Gretchen Dorff**  
(Thumper)  
**Jim Efinger**  
**Joyce Efinger**  
**Linda Kuhlenschmidt**  
(Tinker)  
**Jill Lucas** (Daffy)  
**Julie Market** (Jammer)  
**Amber Moody** (Elmer)  
**Debra Mosley**  
(Papi & Travis)  
**Dawn Palmer** (Curlii)  
**Tara Pruitt** (Flipper)  
**Ruth Rosenmeier**  
(Rudee Ruc)  
**Cecilia Thiery** (Dilly)  
**Amy VanBuren**  
(Pebbles)  
**Joyce VanWinkle** (Jo)  
**Bonnie Voges** (Buttons)